



**Building the best railway Scotland  
has ever had**



# Aberdeen to Inverness

Thursday 25<sup>th</sup> October 2018, Glasgow

# Matthew Spence

BEng (Hons) CEng FICE RPP  
Route Delivery Director, Scotland – General & North

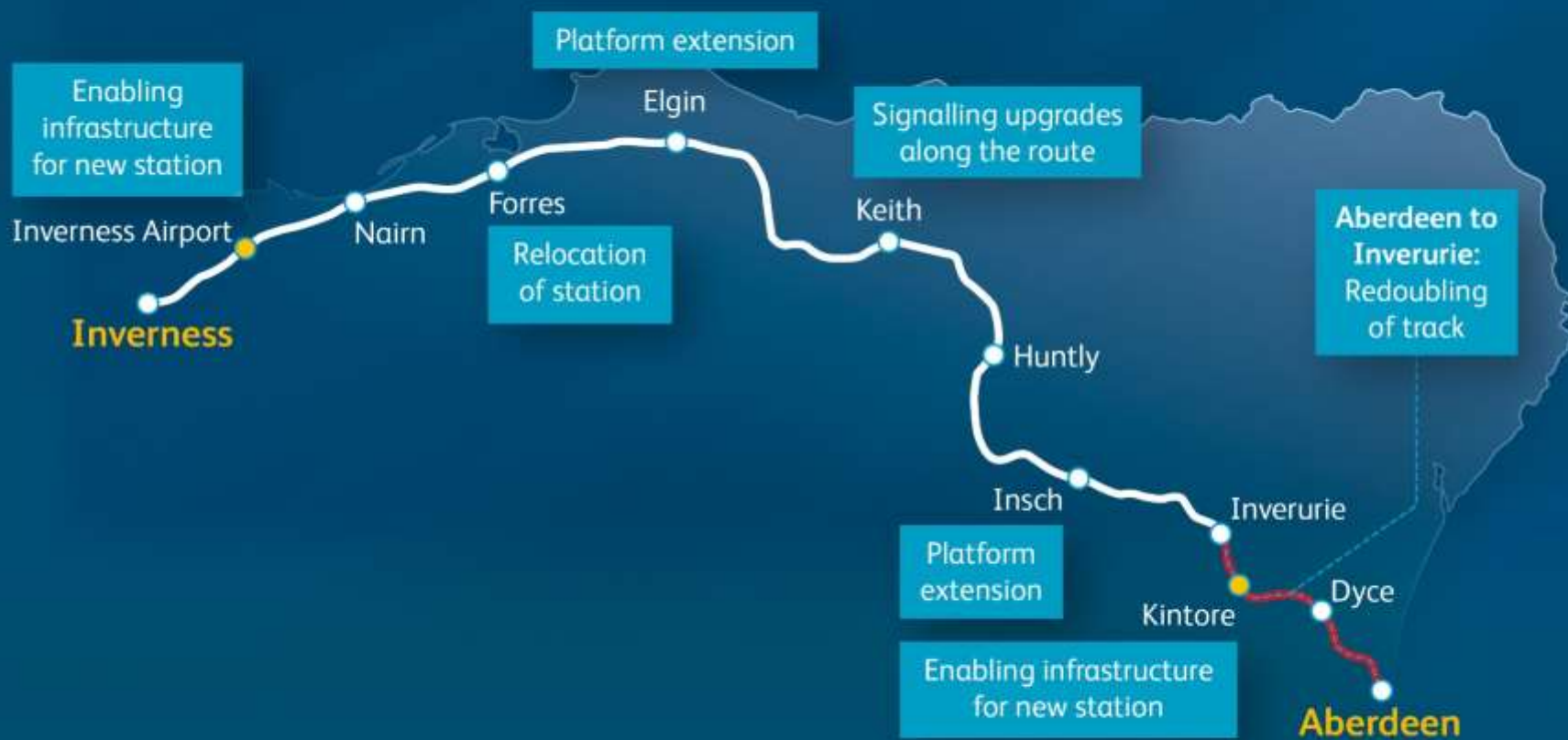


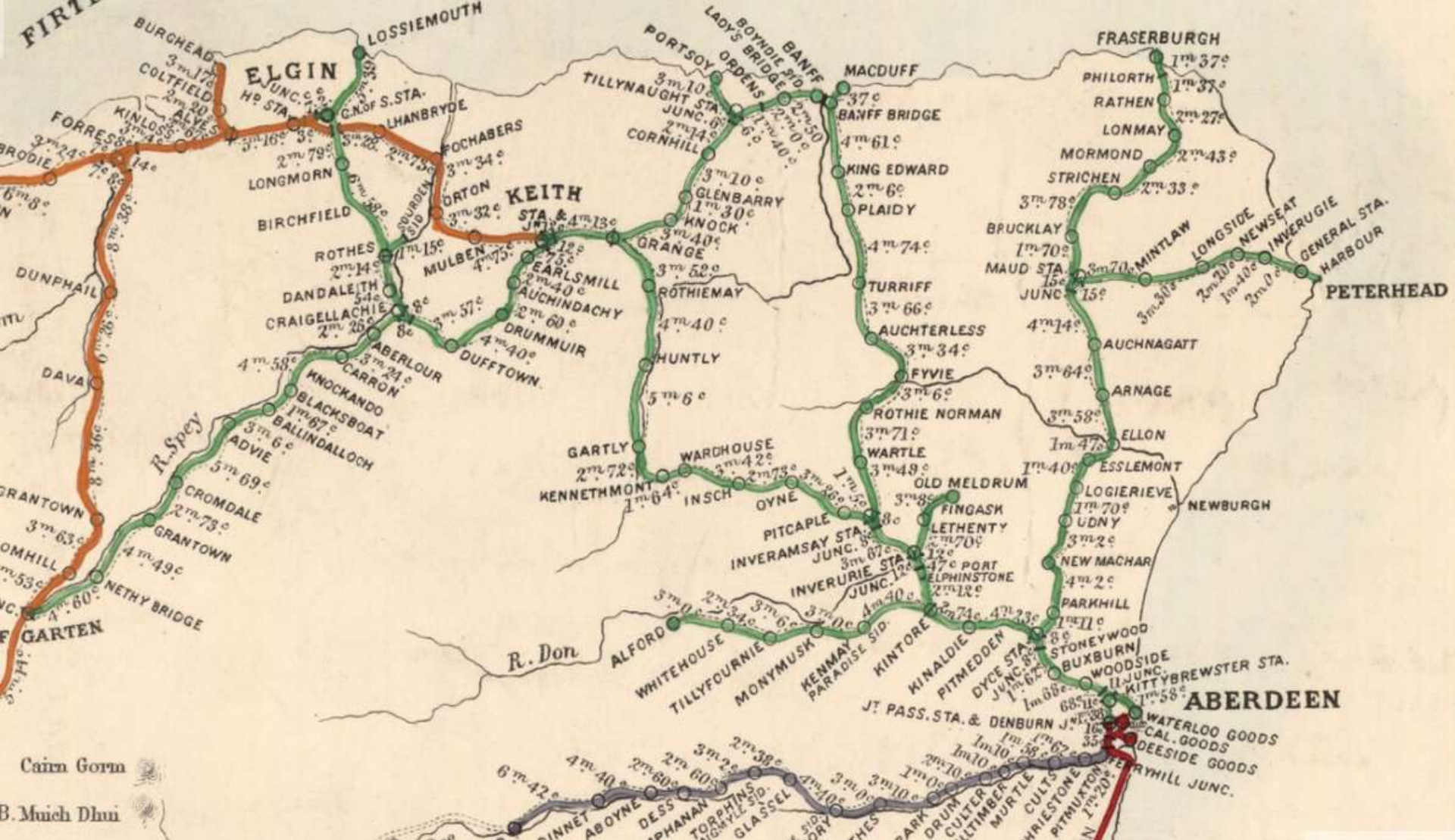
Infrastructure Projects  
Scotland and North East  
151 St Vincent Street  
Glasgow, G2 5NW



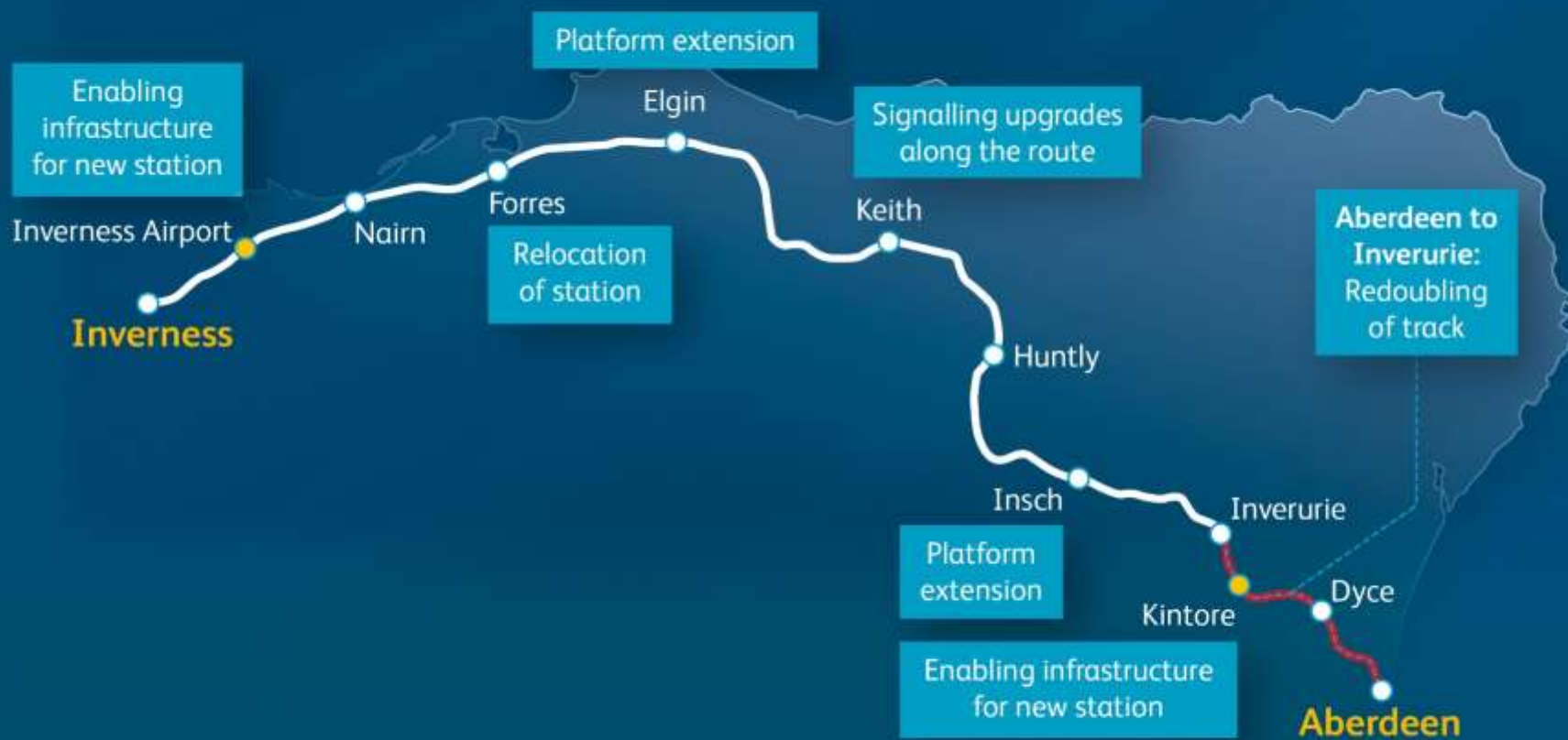


**Time for  
a Safety  
Moment?**









## *Provide a.....*

- Half-hourly service between Aberdeen and Inverurie, and
- Half-hourly service between Inverness and Elgin.
- Regular, hourly service between Aberdeen and Inverness, with a
- Circa 2 hour end to end journey time stopping at all stations.

## *All the above to take into account.....*

- the provision of new stations at Dalcross & Kintore
- and the operation of 2+4/5 HST rolling stock for end to end services (class 158/170 for Inverness to Elgin and Aberdeen to Inverurie)



# *Quiz time!*

How do you get from A to B (or I) quicker?

*Do you.....*

a) Go faster?

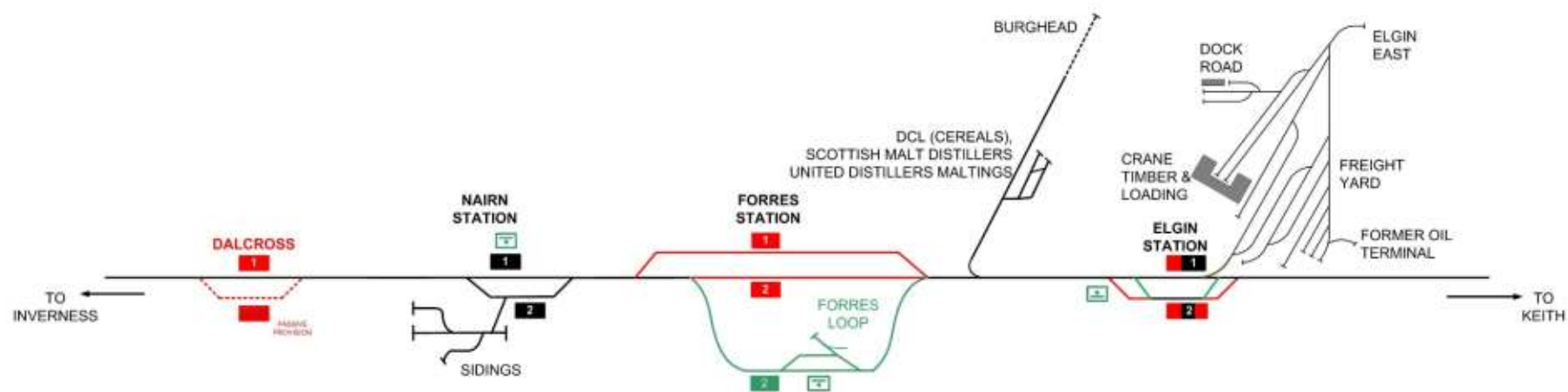
b) Stop less?



# *A phased approach*



## ***Phase 1: West***

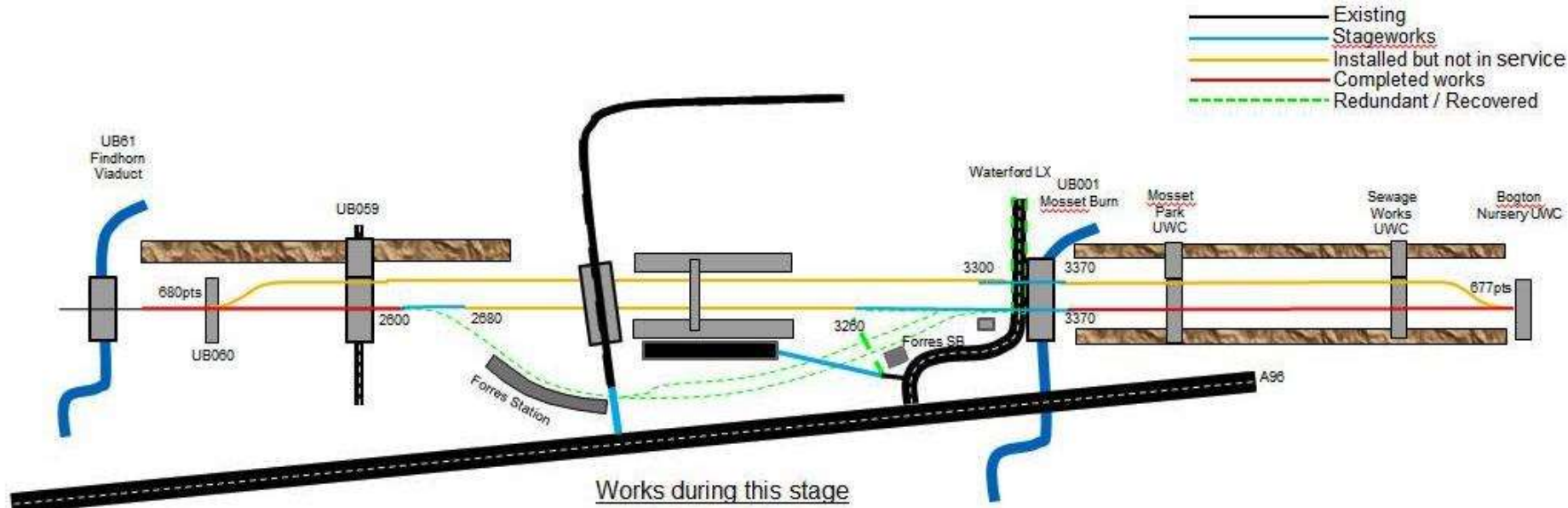








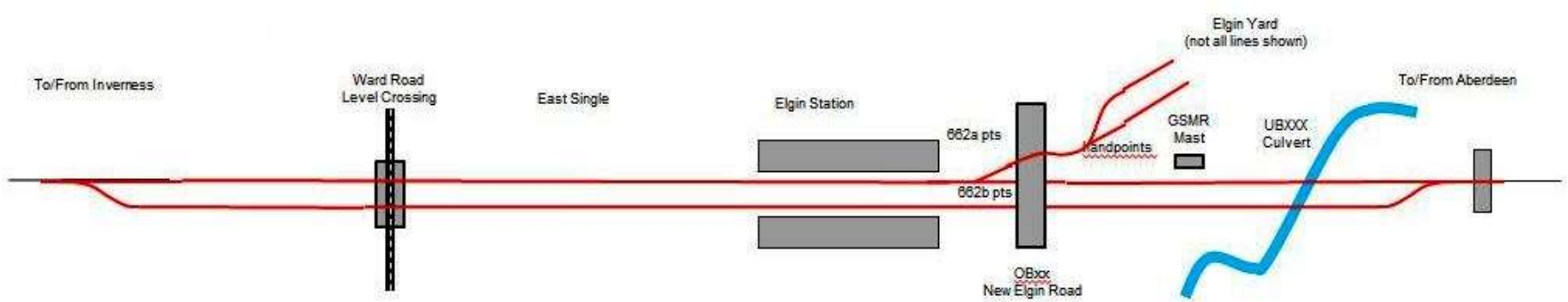




## Key Blockade Scope: Forres

- Commission new station on new twin-track alignment
- Tie-in new alignment (via new UB 001 Mossett Burn)
- Demolish Forres SB and transfer control to Inverness SC Highland WS
- Tie-in new station access roads and public highways





## ***Key Blockade Scope: Elgin***

- Demolish Elgin SB and transfer control to Inverness SC Highland WS
- Extend loop west (through existing signal box footprint) and tie-in (1100m plain line and 662pts)
- Rebuild Ward Road LC as twin track with CCTV
- Commission new platform extensions and extended loop





ROAD  
CLOSED

ELGIN WEST

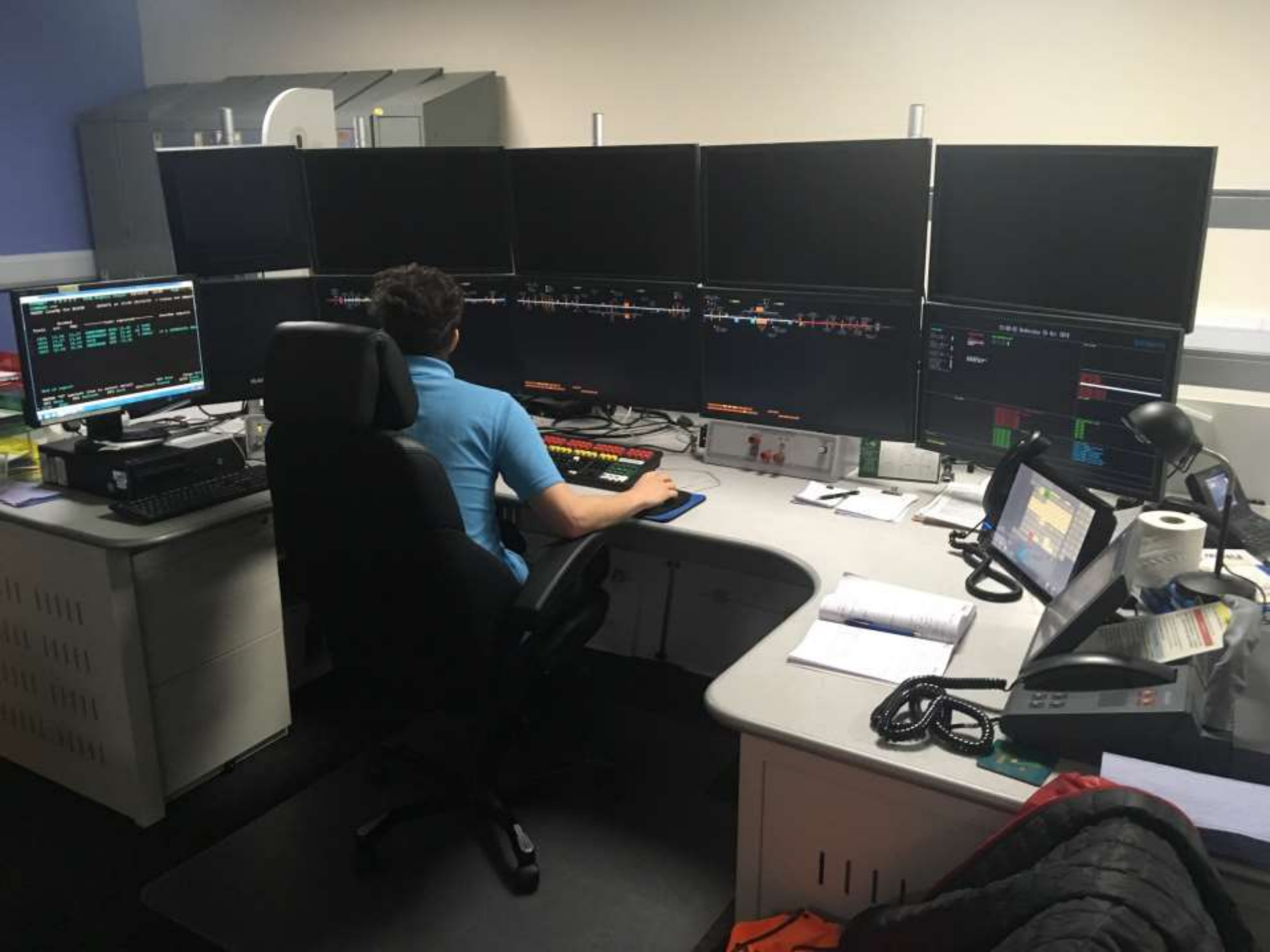










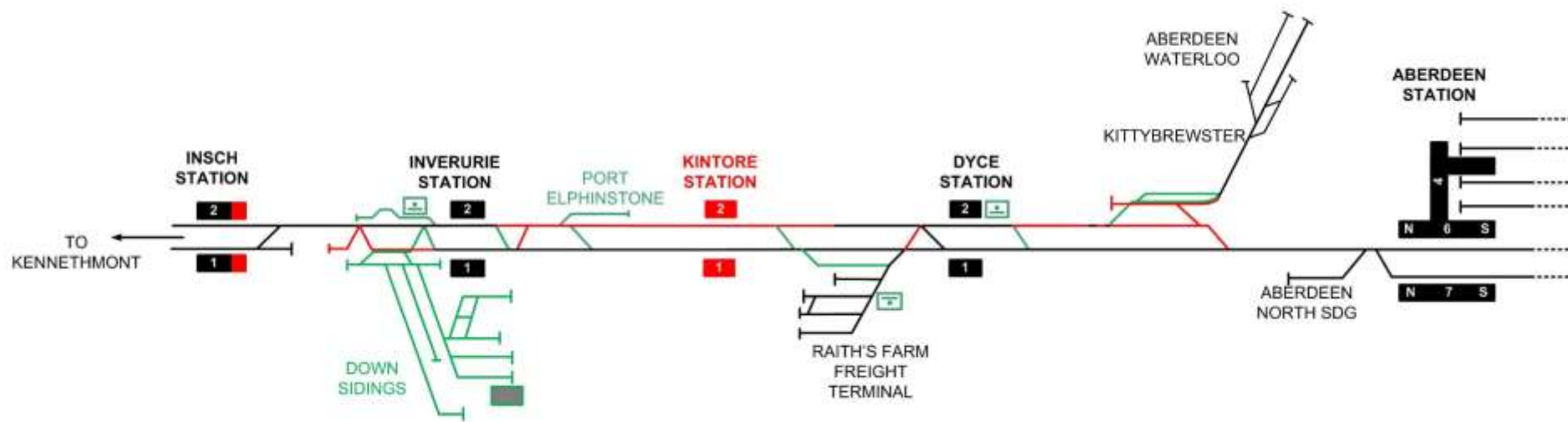








## ***Phase 1: East***



























24/06/2017

























**76,000t**  
earthworks spoil removed



**8.75km**  
new troughing

**65,000t**  
ballast used



Installation of  
new signals

**19,000**  
sleepers



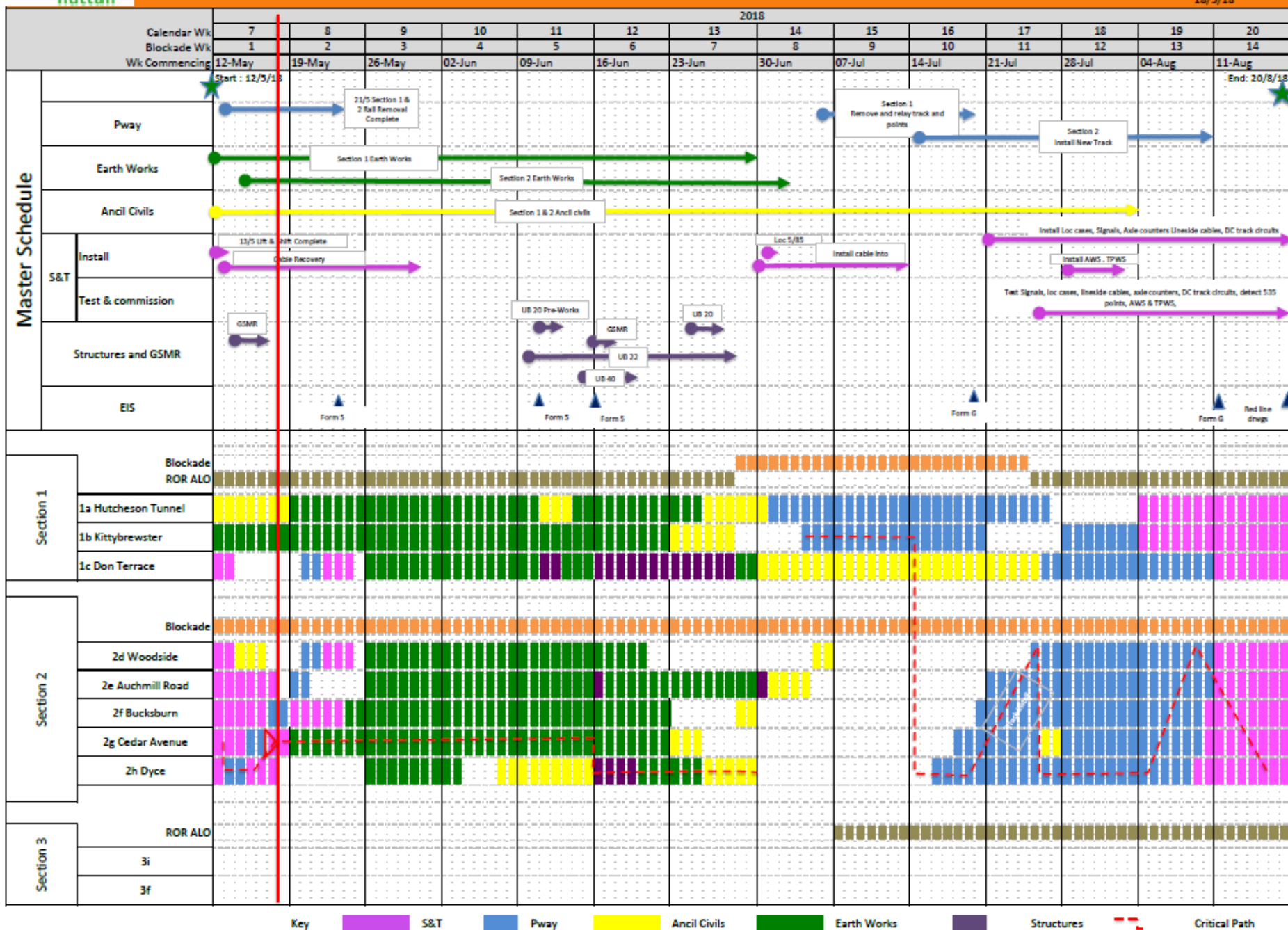
**10km**  
of new rail



**72km**  
of cable



**3.75km**  
track drainage



# Drone Footage

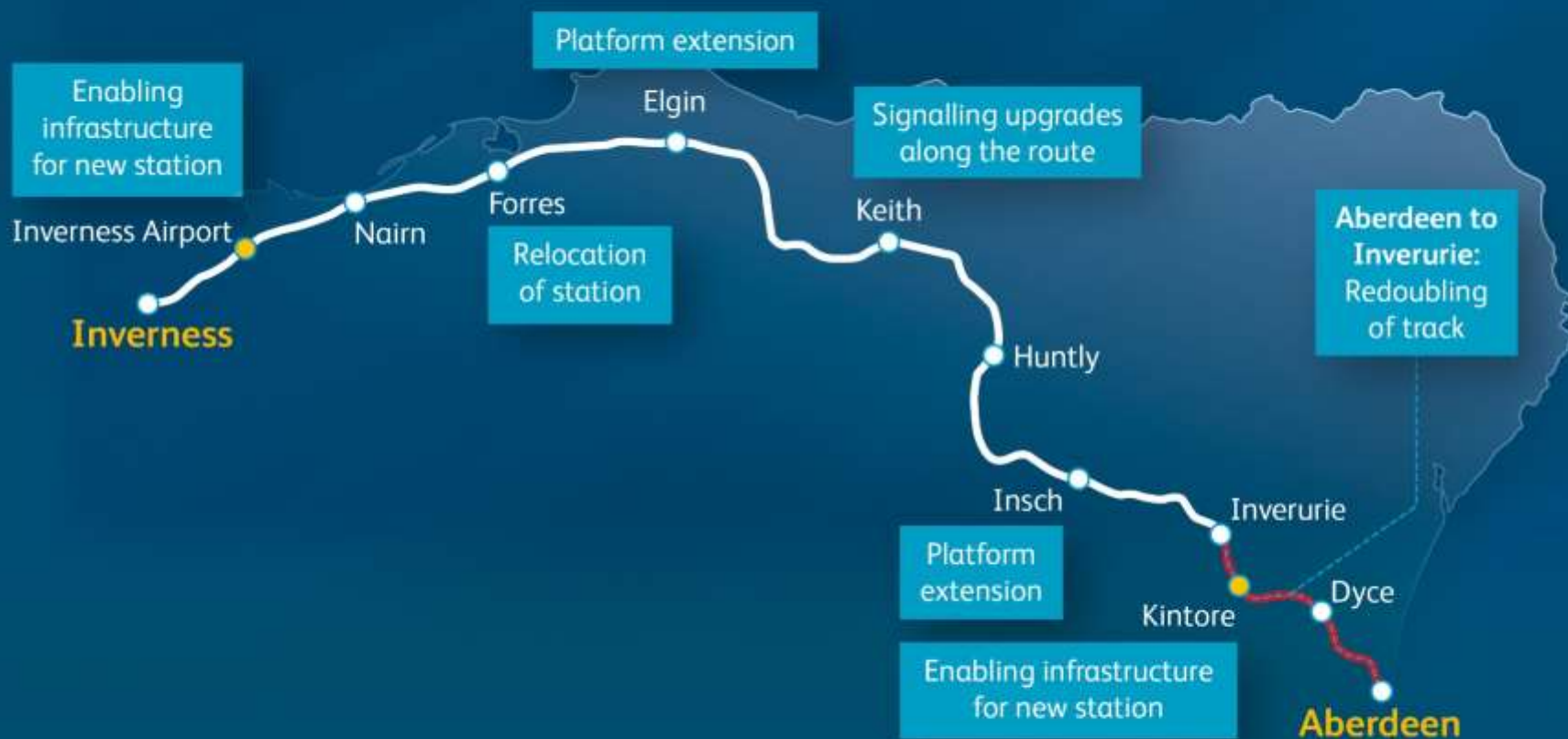


## ***Phase 1: East – ‘Part 2’***

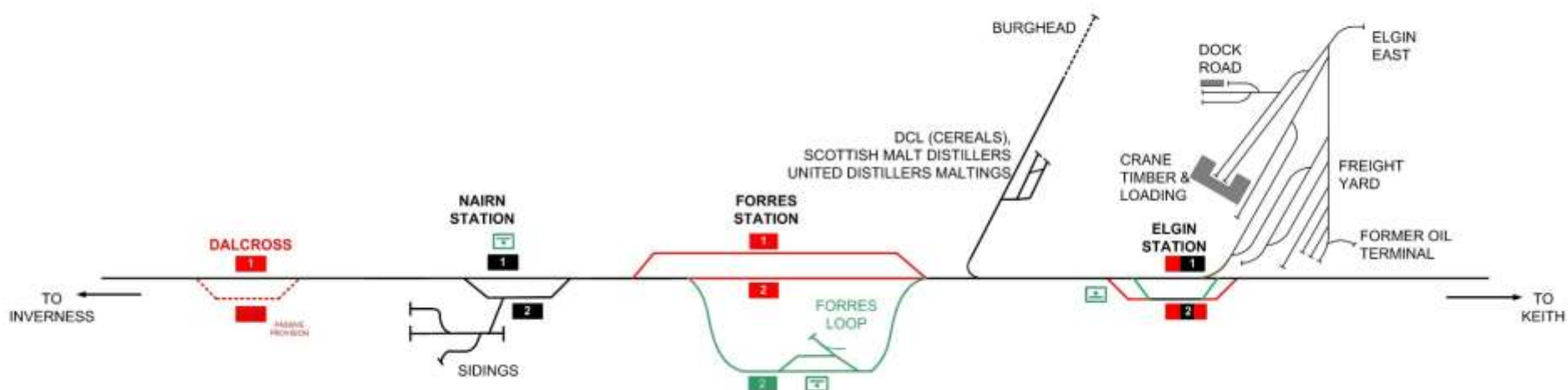




# Phase 1 Summary



## Future Phases



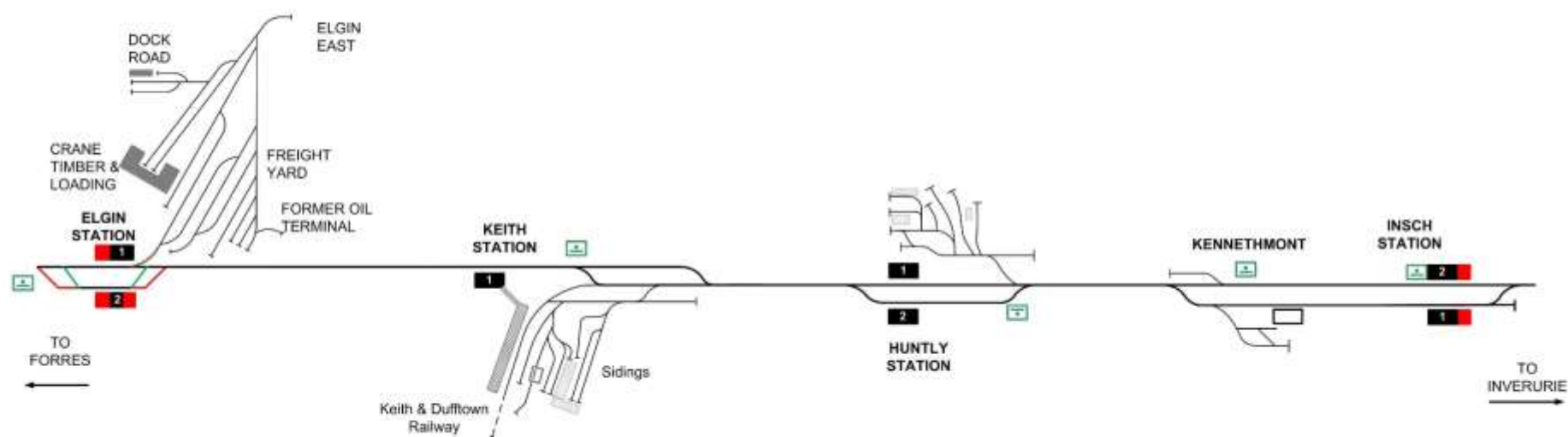




Imagery ©2018 DigitalGlobe, Map data ©2018 Google United Kingdom Terms Send feedback 200 m

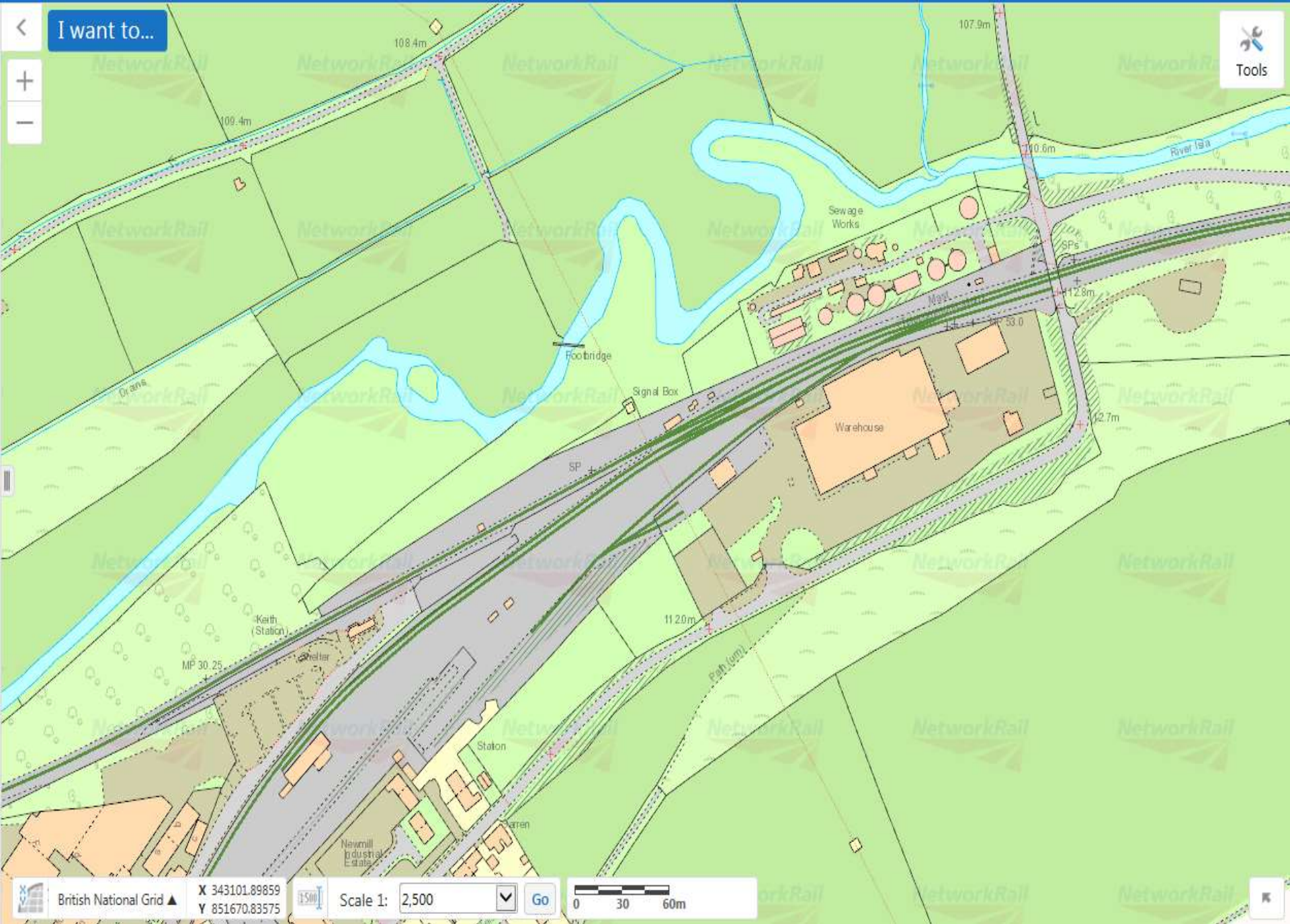


# Central Section





I want to...



British National Grid ▲

X 343101.89859  
Y 851670.83575

Scale 1: 2,500

0 30 60m



## ***Future Phases - Summary***

***Thank you for  
listening!***



**Building the best railway Scotland  
has ever had**





***Any Questions?***