



Create a thriving workspace through IoT & energy management

Charles Chau
Senior Business Development Manager, Digital Products
CLP Innovation



What is your IDEAL IoT Platform?



One-platform to provide
automated solution for optimizing
office operation and energy saving



How to design a Smart Workspace



Smart Energy Connect (IoT Platform)



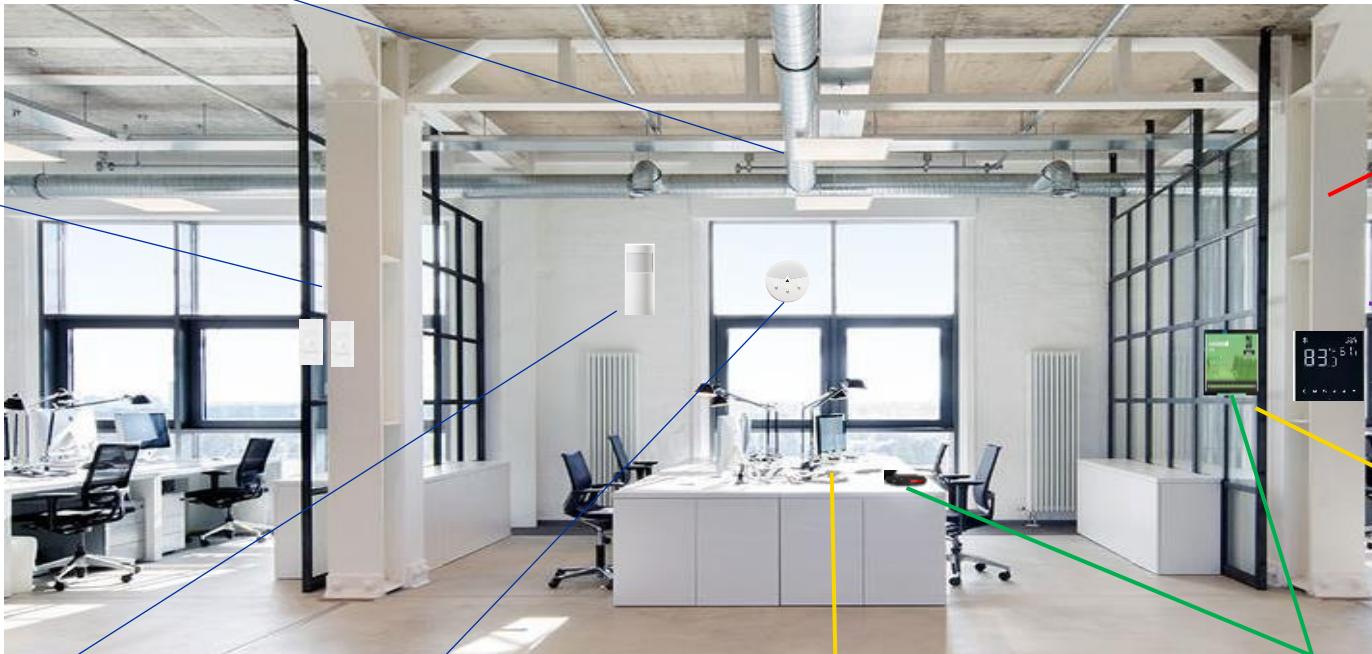
- IoT Lighting System
- IoT HVAC System
- IoT Booking System
- IoT IAQ System
- IoT Metering System



Load Controller



Wireless Remote



Wireless metering



Smart IAQ Control



Wireless Occupancy sensor



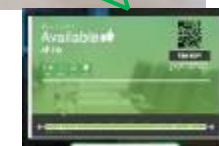
Wireless Daylight sensor



Wireless Temp and Humidity Sensor



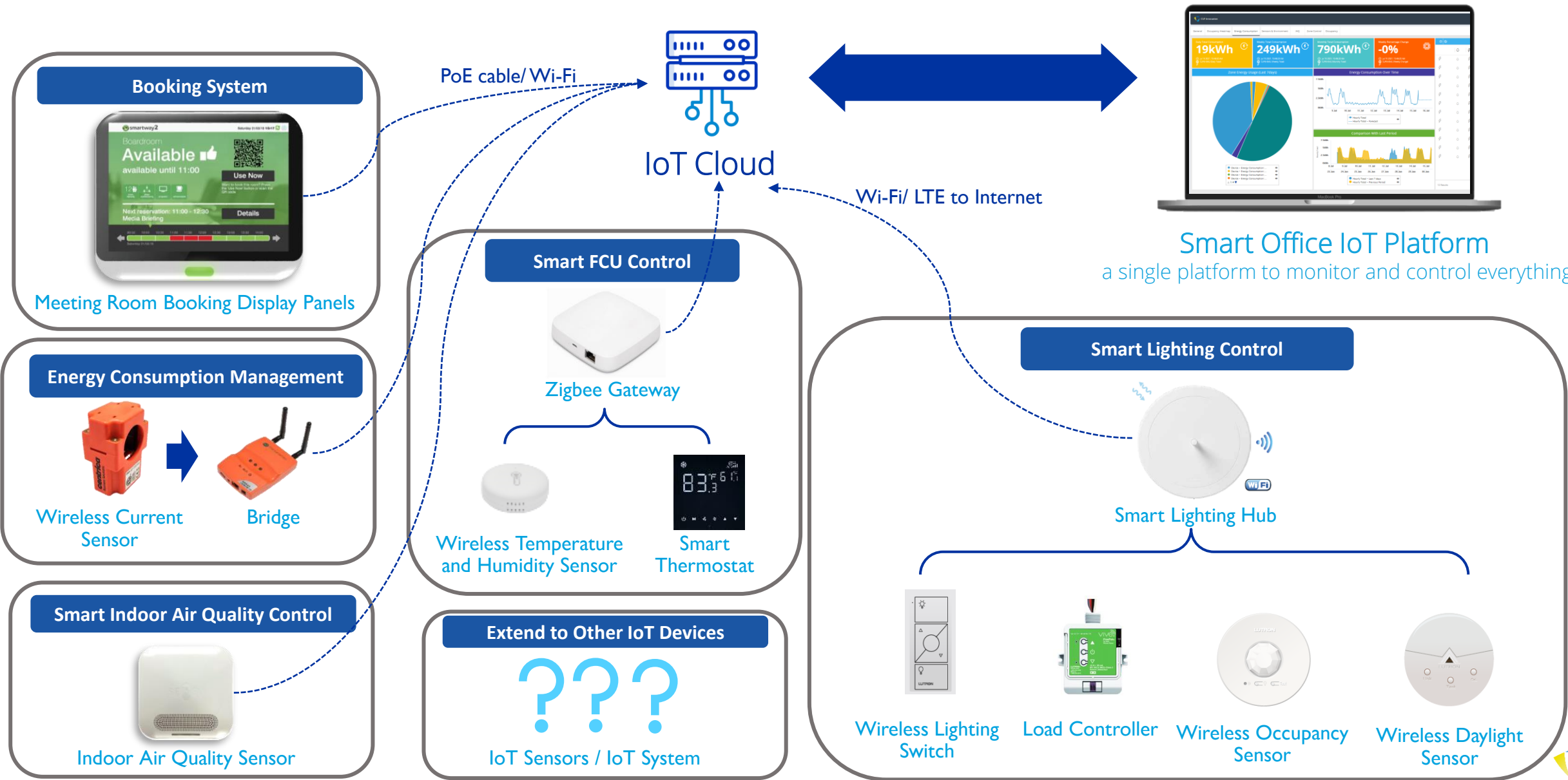
Smart Meeting Room & Smart Hot Desk



Smart Thermostat



Wireless/wired communications and system scalability



Workspace optimisation through integration



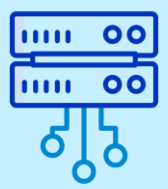
1



Motion Sensor

To detect if there is anyone in the meeting room

2



IoT Platform Optimisation

3



Smart Booking System

Auto Check in and out according to occupancy

Asset/ Space Optimisation



4

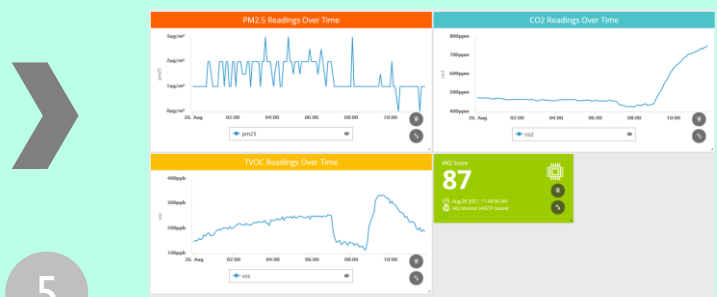
IAQ Sensor



Wellness Optimisation

6

Air Purifier

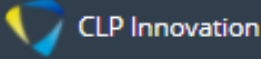


5



Smart Office IoT Platform

Automation autonomy



CLP Innovation

All Rules [Save As Report](#) [Export Report](#) ⌵

  [+ Filters](#)

<input type="checkbox"/>	Active	Name	Description
<input type="checkbox"/>	<input checked="" type="checkbox"/>	Meeting Room - Auto pre-c...	5 minutes in-advance turning on the air conditioner before the meeting
<input type="checkbox"/>	<input checked="" type="checkbox"/>	Meeting Room - Auto Proje...	5 minutes in-advance turning on the light and projector when there is a meeting
<input type="checkbox"/>	<input checked="" type="checkbox"/>	Scheduler	08:00 will turn on Meeting Room 1 lighting
<input type="checkbox"/>	<input checked="" type="checkbox"/>	Open Area - Auto Pre-cool ...	Turn on all A/C and Lighting at 07:00 (Mon to Fri)
<input type="checkbox"/>	<input checked="" type="checkbox"/>	Open Area - Turn off all A/C...	Turn off all A/C and Lighting at 19:00 (Mon to Fri)
<input type="checkbox"/>	<input checked="" type="checkbox"/>	Turn on Air Purifier	Turn on Air Purifier when the IAQ Score is lower than 70



Boards



Things



Devices



Rules



Alarms



Reports



Users



Case Study | Office of Swire Coca-Cola Hong Kong



Group controls for lighting, air conditioning and air ventilation
One-click control for all devices

24/7 monitoring on energy
saving progress and consumption
breakdowns

Identified usage patterns and trends

By charting air flow and water flow data

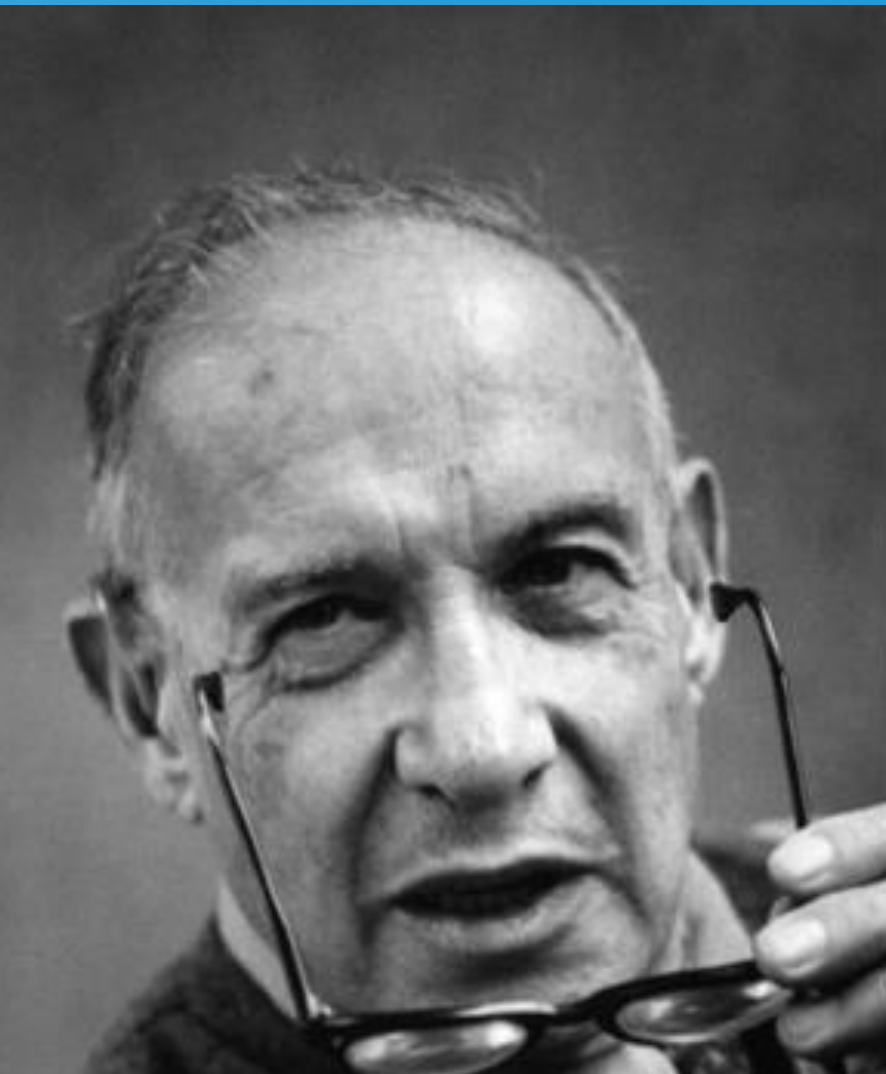
 | *Coca-Cola*
SWIRE COCA-COLA

300+ IoT devices

Integrated in one platform
Smart Sensor Automation
at Coca Cola HK office

- Energy consumption monitoring
- Occupancy tracking
- Lighting control
- AC control
- Air purifier toggle
- Flow meters





You can't manage what you don't
measure.

— *Peter Drucker* —

3 big common challenges faced by the industry



Lost track of the decarbonization target



Missing energy consumption data for ESG reporting

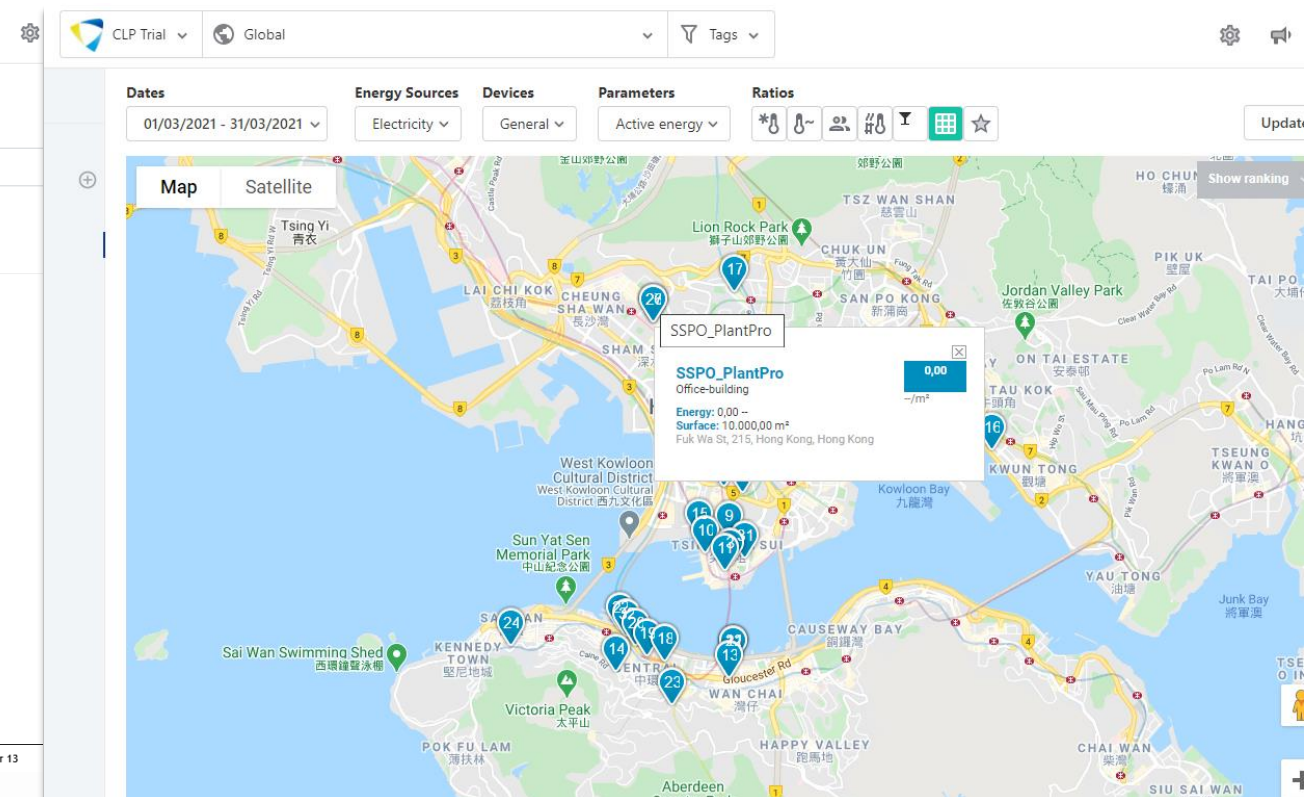
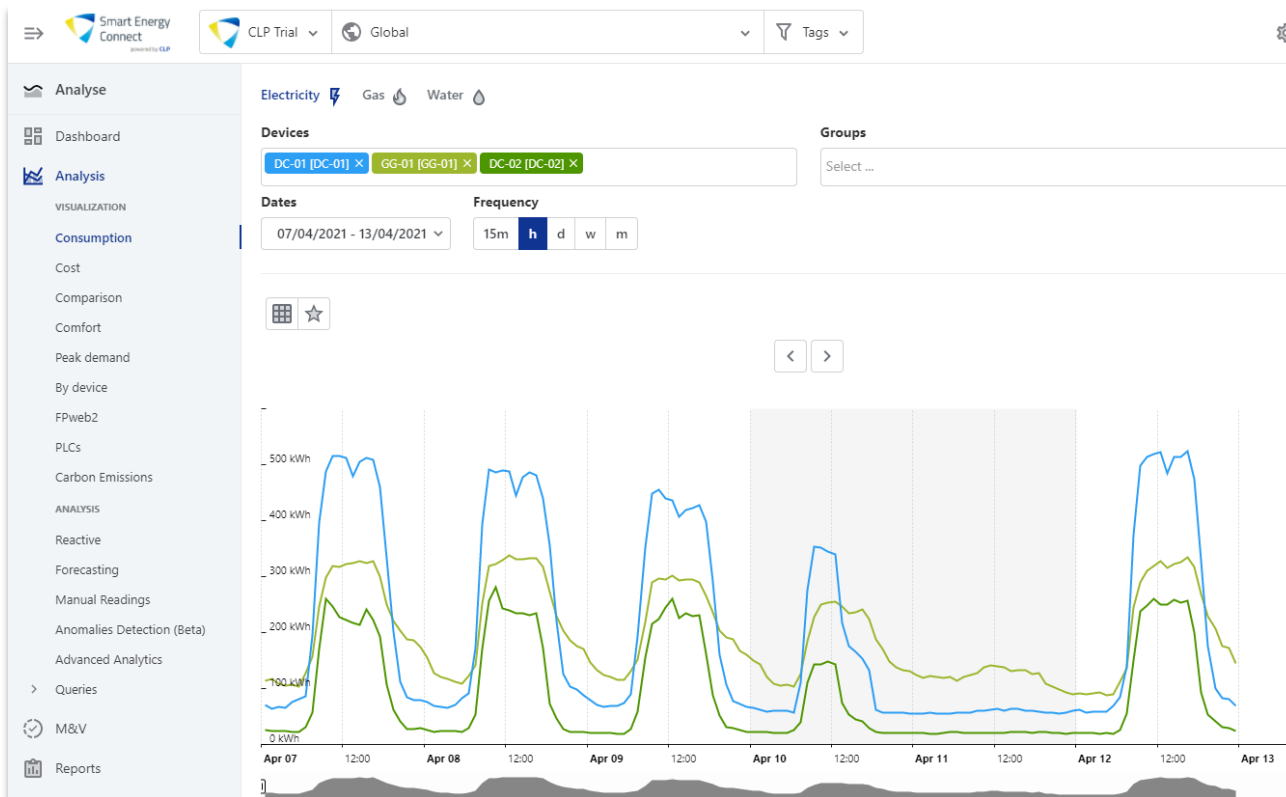


No granular data for analytics



An all-in-one smart energy management platform to multiple buildings/sites

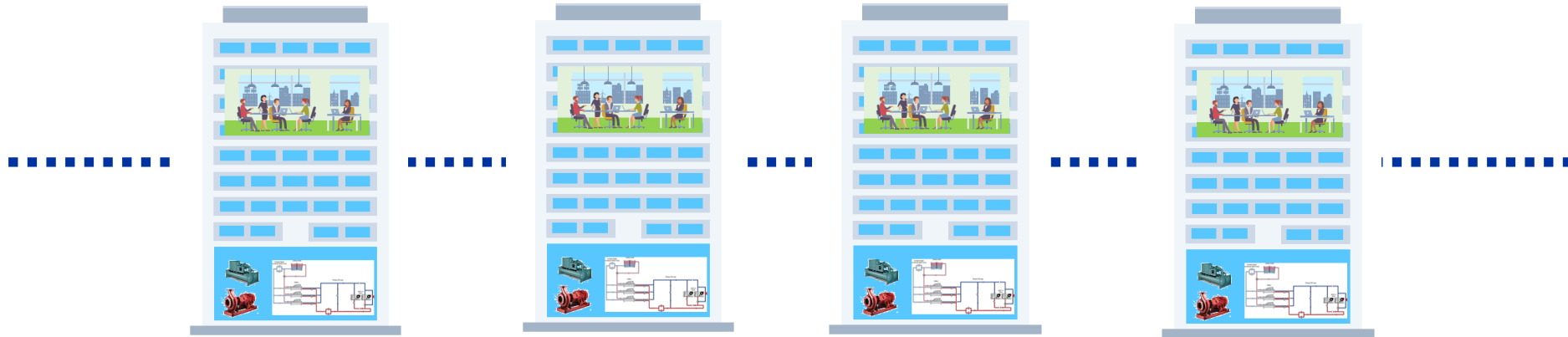
- visualise, analyse, benchmark energy consumption
- track energy savings in measurement & verification (M&V) projects



How does it works



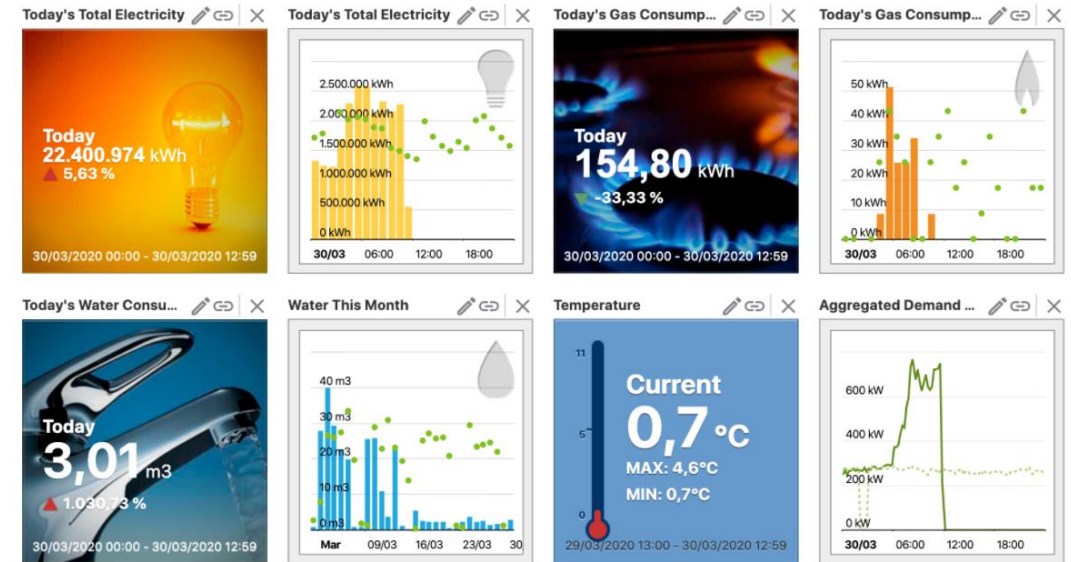
Energy Management of Your Multiple Sites



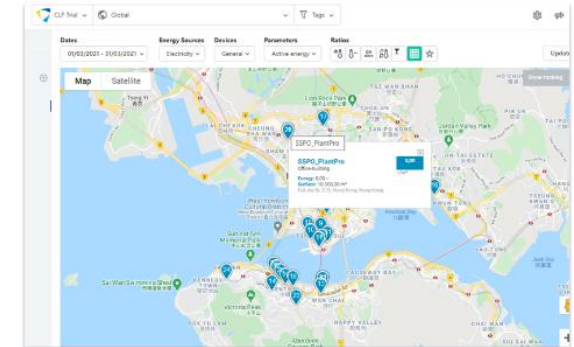
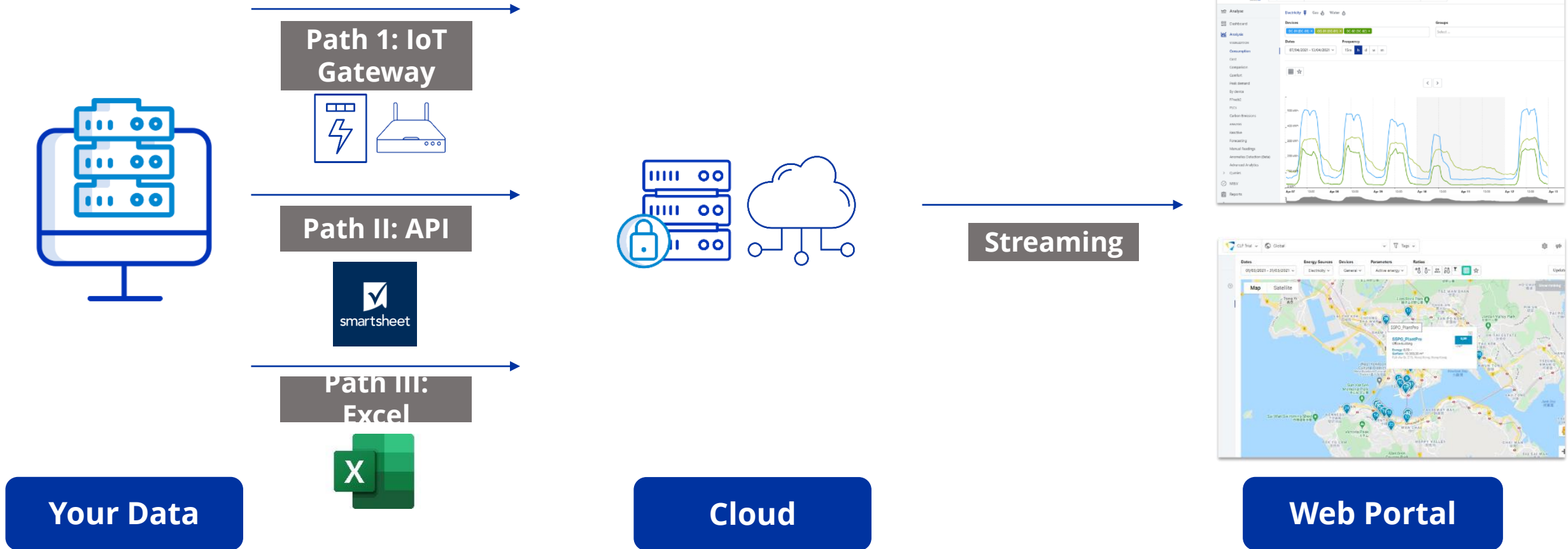
Easy Integration and Data Insertion



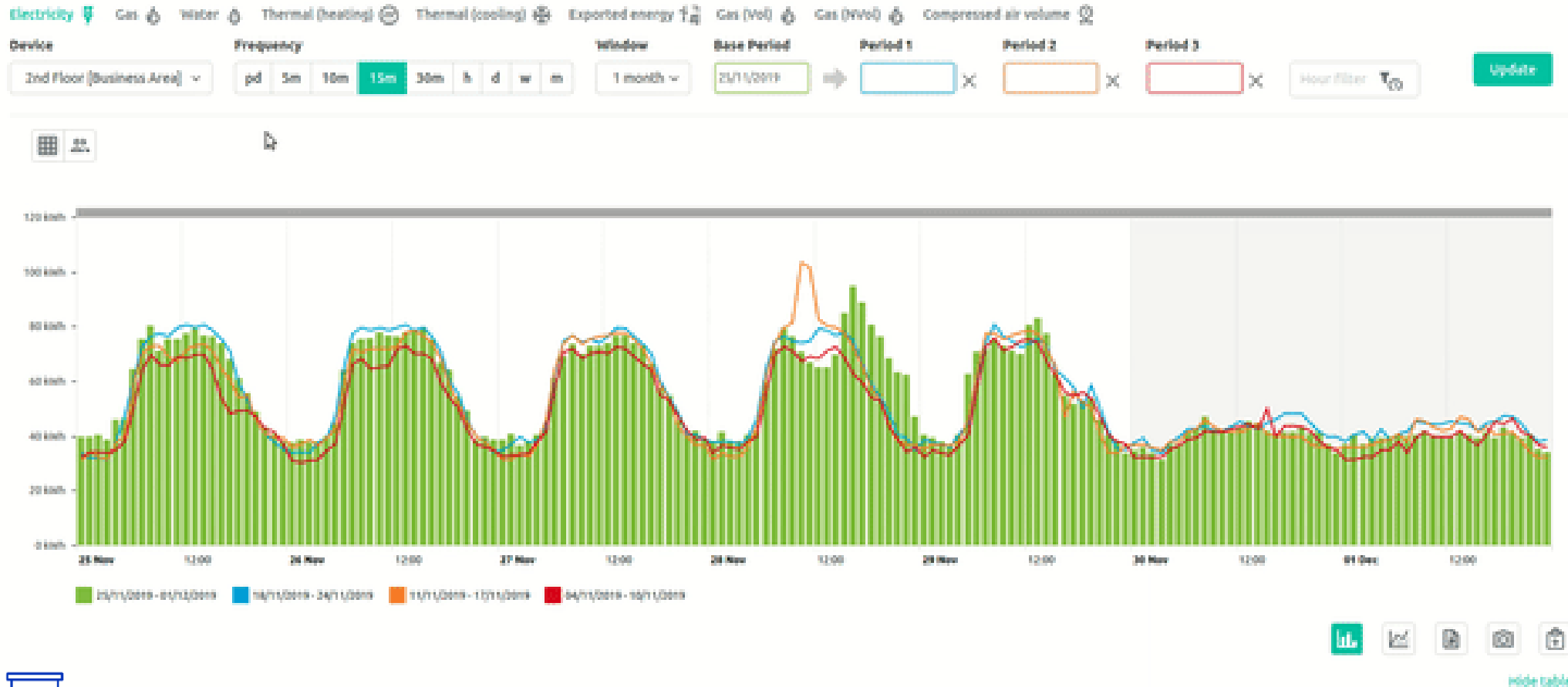
Multiple Energy Sources



Where does your data go?



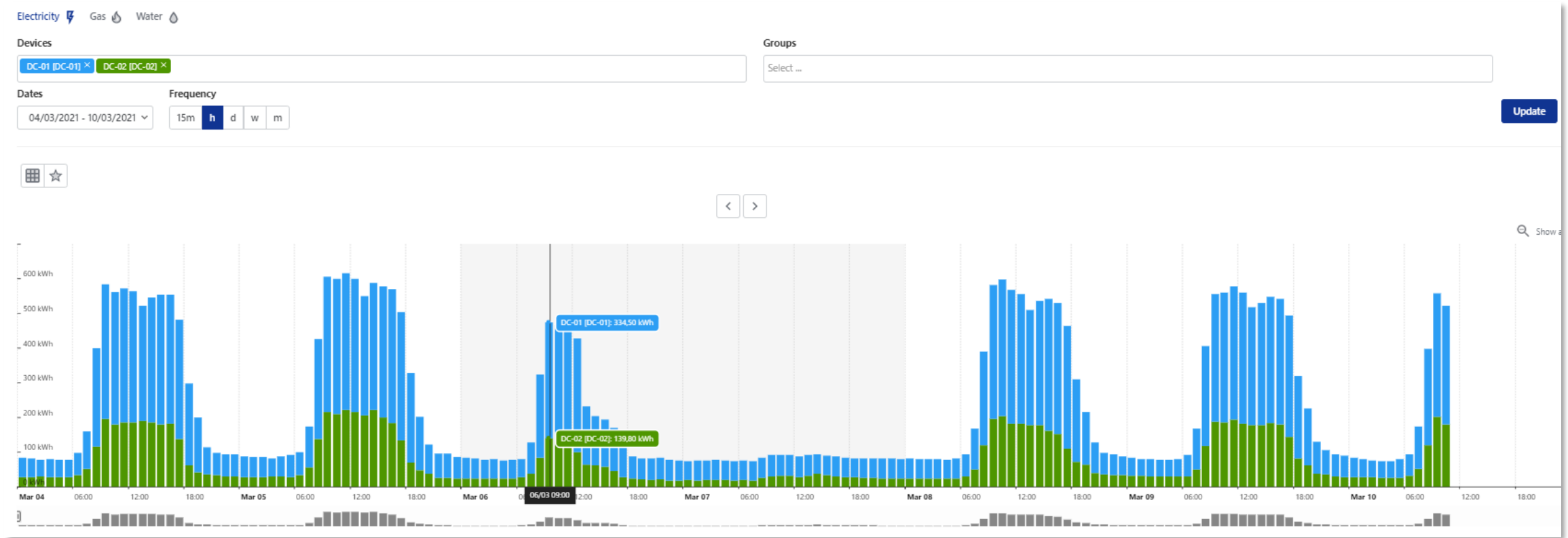
Feature 1: 24/7 Energy data management



Visualise **real-time** 24/7 granular energy consumption data of multiple buildings with intuitive load profile



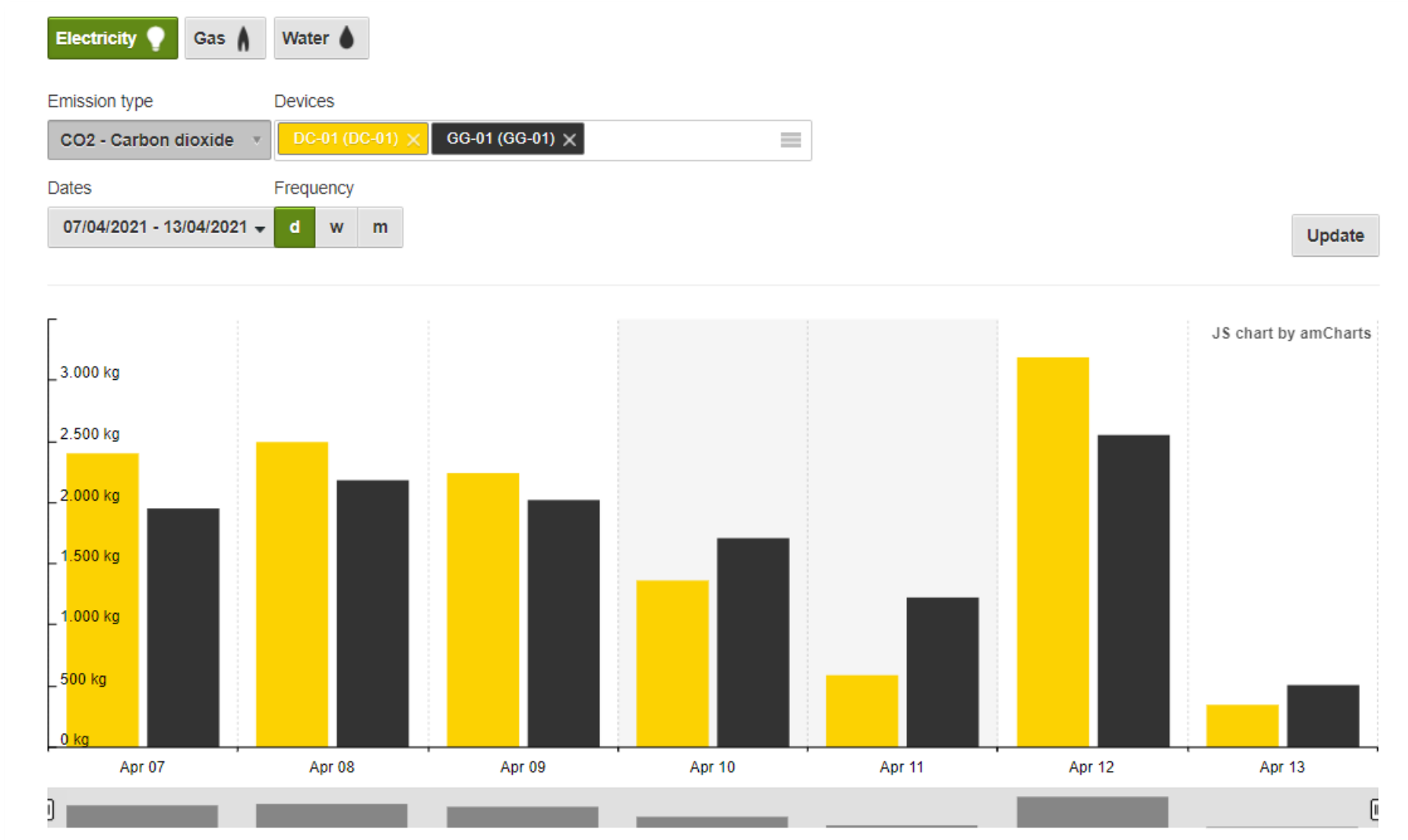
Feature 2: Normalised site comparison



Flexibly compare energy usage among your buildings/devices, with normalisation based on GFA, weather, occupancy (API), custom fields (e.g. production output) etc.



Feature 3: Carbon emission management



Calculate and monitor carbon emissions for your buildings to achieve the target in your decarbonisation journey



Feature 4: Automated alerts



The screenshot shows the 'New alert' configuration screen in the Smart Energy Connect application. The top navigation bar includes the 'Smart Energy Connect' logo, 'CLP Trial' and 'Global' dropdowns, and a 'Tags' filter. A left sidebar lists navigation options: 'Analyse', 'Dashboard', 'Analysis', 'M&V', 'Reports', and 'Alerts'. Under 'Alerts', there is a 'NEW ALERT' section with expandable options for 'No data alert' and 'Threshold alert'. The main content area, titled 'New alert', features a two-step progress indicator (1 and 2) and six alert type cards: 'Threshold alert' (line graph with threshold), 'No data alert' (signal tower with crossed-out signal), 'Load excess' (gauge with lightning bolt), 'Reactive excess' (bar chart with 'R'), 'Cost' (line graph with money icon), and 'Tunnel alert' (bell curve). At the bottom right, there are 'Cancel' and 'Next' buttons.



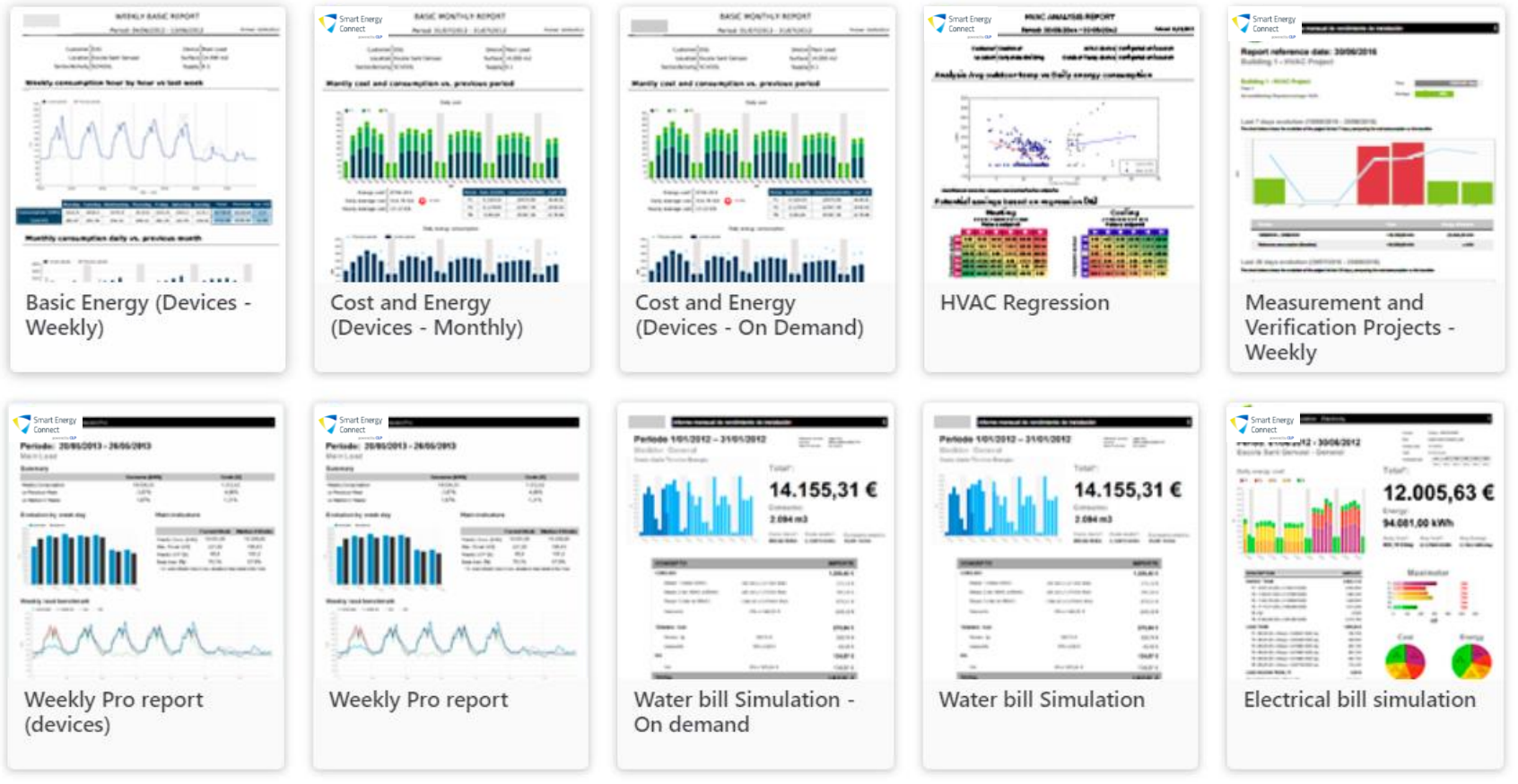
Set **automated alerts** to keep informed of unusual situations with email notifications to facility managers and/or technical team



Feature 5: Automated report



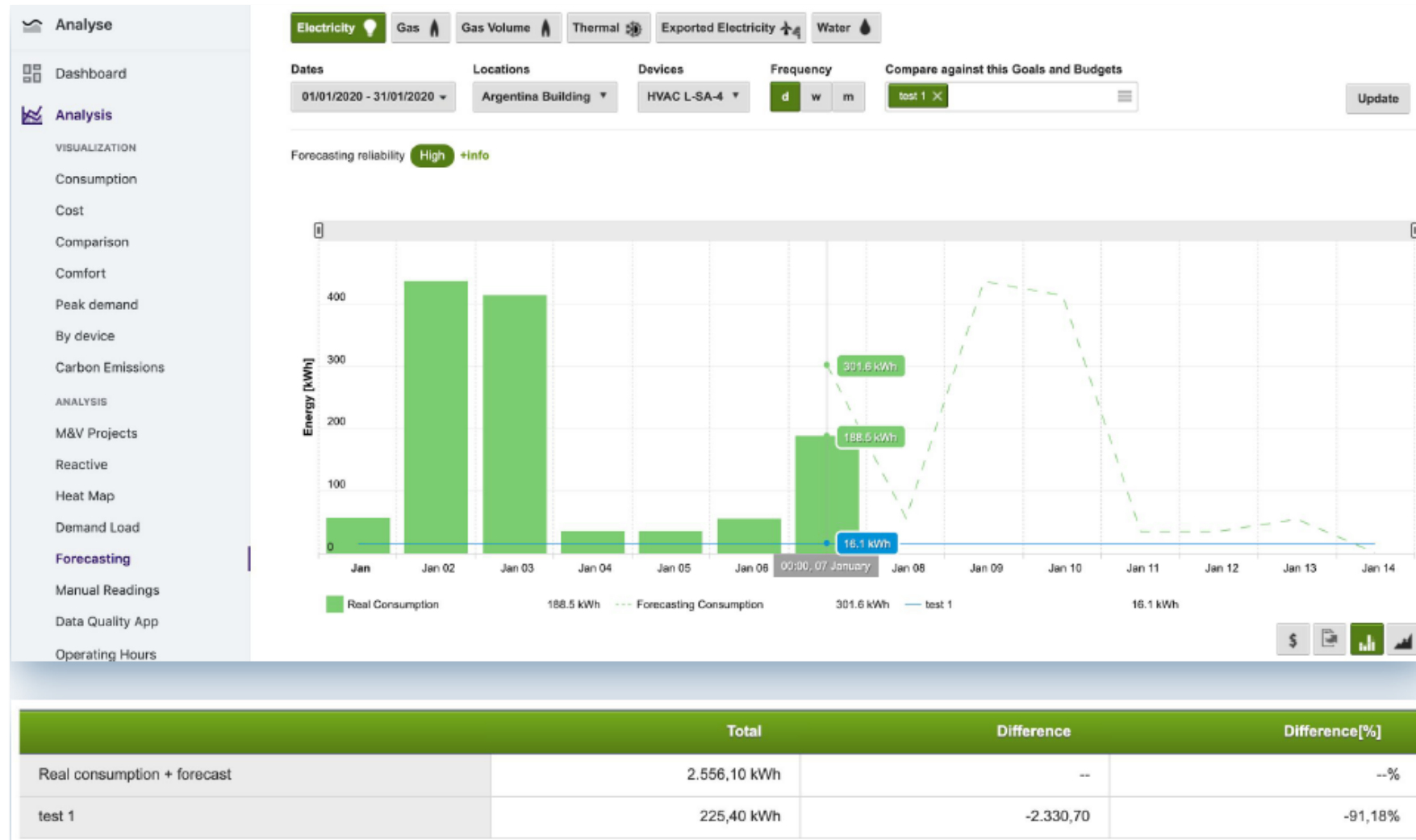
Existent templates



Schedule automated reports to stakeholders with 15+ templates available to reduce manual report consolidation effort



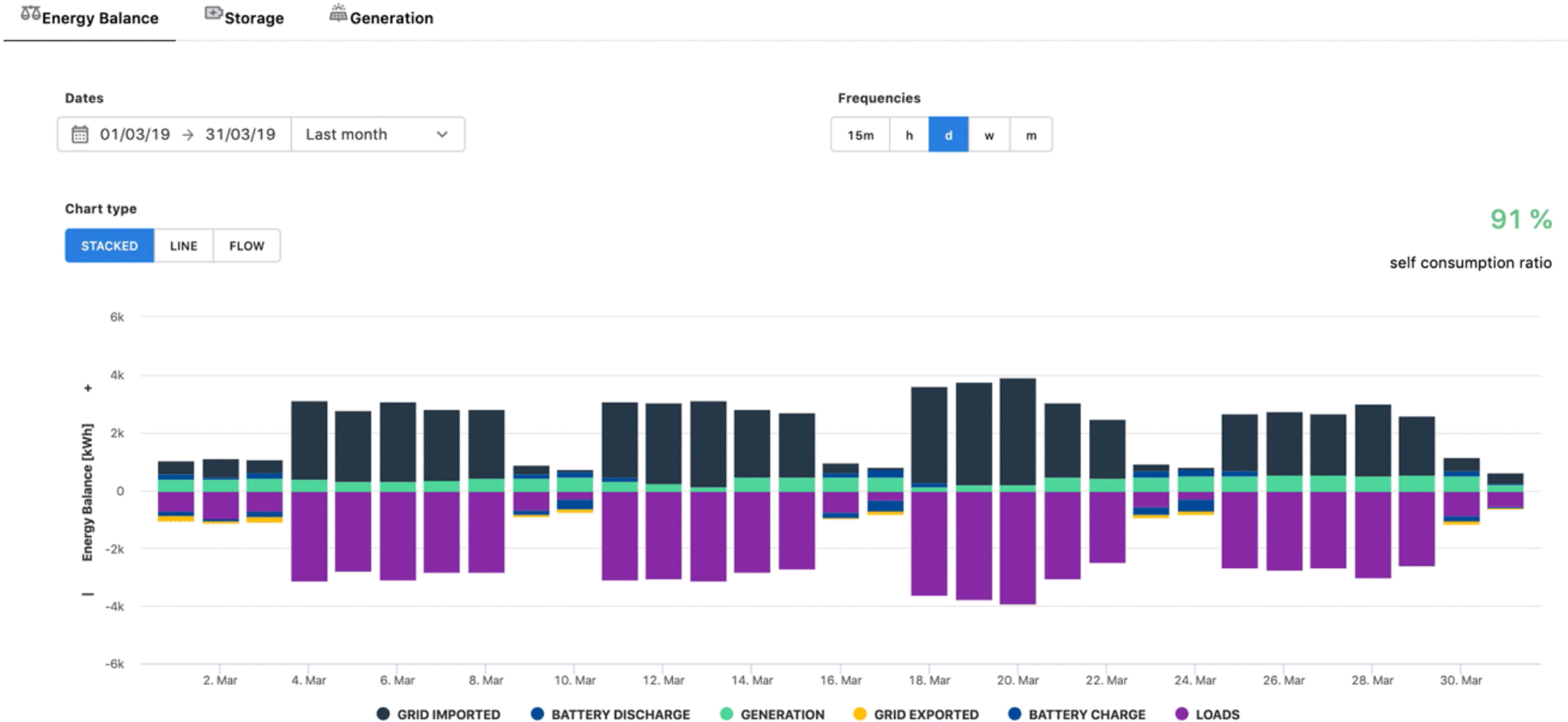
Feature 6: Forecasting



Forecast your energy consumption based on historical data



Feature 7: Renewable energy management



Optimise your solar assets, quantify green energy balance and visualise exported photovoltaic (PV) solar energy generation



Determine and keep track of your energy saving



Analyse

Dashboard

Analysis

M&V

Projects

Groups

Reports

Alerts

M&V Projects +

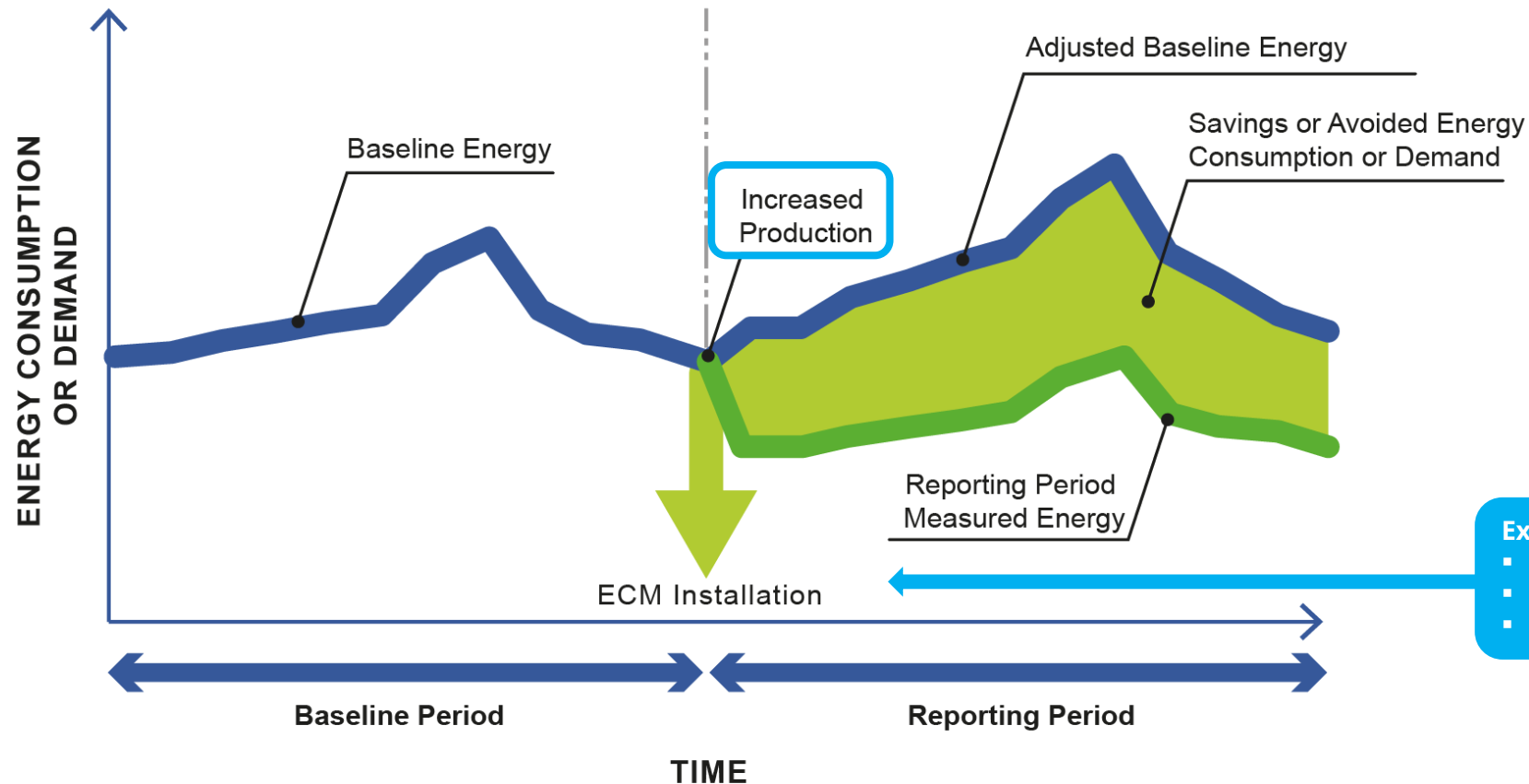
Name	Type	Target	Saved %	Saved	
Change to LED Lighting: Formula	Lighting	10,00%	30,54	8.607,56 kWh	441 / 654 Days 30,54% / 10,00 %
Change to LED lighting: Temporal ranks	Lighting	10,00%	15,79	3.672,87 kWh	441 / 654 Days 15,79% / 10,00 %
Electricity management	Energy Management	5,00%	34,74	2.024,20 kWh	153 / 366 Days 34,74% / 5,00 %
Gestion de l'énergie du bureau 2020	Energy Management	20,00%	14,24	631,39 kWh	153 / 366 Days 14,24% / 20,00 %
Office Energy Management 2018-2019	Energy Management	10,00%	1,57	62,34 kWh	256 / 256 Days 1,57% / 10,00 %
Behavioral energy improvements	Energy Management	5,00%	-0,98	-31,15 kWh	62 / 62 Days -0,98% / 5,00 %



Things you need to know about IPMVP



- International Performance Measurement and Verification Protocol
- Use adjusted baseline to measure energy saving, i.e. telling how much less energy you have used than you would have without implementing your energy conservation measure (ECM)



Examples of Energy Conservation Measures

- LED lighting
- Retro-commissioning works
- Solar systems and battery storage



More than Energy Management System



Compare target savings to actual savings

Baseline energy consumption

Actual energy consumption **lower** than baseline energy consumption

Actual energy consumption **equal** to baseline energy consumption

Actual energy consumption **higher** than baseline energy consumption

Track the progress of M&V projects



Thank You

Contact Us

 charles.chau@clp.com.hk

 www.clpsec.com

 [Smart Energy Connect](#)

 [Smart Energy Connect](#)

