

# CONTENT

## 01 | CONTENT

## 02 | PROGRAM

## 05 | CONGRATULATORY MESSAGE

- Permanent Secretary for Development (Works), HKSAR Government
- Deputy Head of Mission, British Consulate General, Hong Kong
- IMechE President
- HK PolyU President
- Chairman, EngNow Steering Committee

## 12 | Keynote address

- Permanent Secretary for Development (Works), HKSAR Government

## 13 | Keynote speech

- Deputy Head of Mission, British Consulate General, Hong Kong
- Chairman, EngNow Steering Committee

## 15 | Forum 1

- View for Leaders – How Different and How Common We Are

## 21 | Forum 2

- Be a Leader of Yourself – What Is Needed To Become a Successful Entrepreneur

## 27 | Lectures

- Lecture 1 – How can Leadership be Learned?
- Lecture 2 – Bring Your Point Out with Power
- Lecture 3 – Courage to Lead: How to Build Courage?
- Lecture 4 – From No-idea Towards Marketable Products – Engineering and Business Integration
- Lecture 5 – Discovering Success Through High Performing Teams

## 33 | Forum 3

- Roles of Global Engineering Leaders

## 39 | Forum 4

- Future Engineering Leaders – What Does it Mean?

## 45 | Advertisement

## 56 | MAP



# EngNow - 360° Leadership Training: YOUNG LEADERSHIP CONFERENCE Programme Rundown

## 16 September 2013 (Day One)

Venue 1: Chiang Chen Studio Theatre (CCST), The Hong Kong Polytechnic University, HK

Venue 2: Jockey Club Auditorium (JCA), The Hong Kong Polytechnic University, HK

---

### 0900 hr. – 0910 hr. Opening Remark

(CCST)

Prof Tong, Timothy W.  
EngNow Honorary Chairman

---

### 0910 hr. – 0940hr. Keynote Address

(CCST)

Ir Wai, Chi-Sing  
The Permanent Secretary for Development (Works), HKSAR Government

---

### 0940 hr. – 1010 hr. Keynote Speech: "International Leadership in the Public and Private Sectors"

(CCST)

Mr Paul Lynch  
The Deputy Head of Mission, British Consulate General, Hong Kong

---

### 1010 hr. – 1040 hr. Keynote Speech: "Engineers and Leaders in Common"

(CCST)

Prof Stuart Cameron, MBE  
Chairman, EngNow Steering Committee

---

### 1040 hr. – 1100 hr. Break

---

### 1100 hr. – 1230 hr. Forum 1: "View for Leaders – How Different and How Common We Are"

(CCST)

Chaired by Ir Edmund Leung

1. Prof Stuart Cameron, MBE, Chairman, EngNow Steering Committee
2. Ir James Kwan, Senior Advisor, The Hong Kong and China Gas Company Limited
3. Mr Paul Lynch, Deputy Head of Mission, British Consulate General, Hong Kong
4. Ir Afred Sit, Deputy Director/Regulatory Services, Electrical and Mechanical Services Department
5. Mr Rick Truscott, Director (Generation), CLP Power Hong Kong Limited
6. Ir Yuen, Sui-See, Director of Operations, The Hongkong Electric Company Limited

---

### 1230 hr. – 1400 hr. Lunch

---

### 1400 hr. – 1530 hr. Forum 2: "Be a Leader of Yourself – What Is Needed To Become a Successful Entrepreneur"

(JCA)

Chaired by Ir Dr Otto Poon

1. Ir Daniel Cheng MH JP, Managing Director, Dunwell Enviro-Tech (Holdings) Ltd.
2. Mr Tommy Chow, Director, Everbright Property Investment Consultancy Ltd.
3. Ir Derrick Pang, Deputy Chairman, Chun Wo Development Holdings Limited
4. Mr Rex Wong, Executive Director & Head of Business Development of Kum Shing Group
5. Prof Wu, Po-Chi, Adjunct Professor, Hong Kong University of Science and Tehnology
6. Dr Daniel Yip, Managing Dinector, G.E.W. International Corporation

---

### 1530 hr. – 1600 hr. Break

---

### 1600 hr. – 1700 hr. Lecture 1: "How can Leadership be Learned?"

(JCA & CCST)

Prof Wu, Po-Chi  
Adjunct Professor, Hong Kong University of Science and Tehnology

### Lecture 2: "Bring Your Point Out with Power"

Mr Donald Yee  
Champion Speaker of Toastmaster



# EngNow - 360° Leadership Training: YOUNG LEADERSHIP CONFERENCE Programme Rundown

## 17 September 2013 (Day Two)

Venue 1: Chiang Chen Studio Theatre (CCST), The Hong Kong Polytechnic University, HK

Venue 2: Jockey Club Auditorium (JCA), The Hong Kong Polytechnic University, HK

---

### 0900 hr. – 1000 hr. Lecture 3: “Courage to Lead: How to Build Courage?”

(JCA)

Mrs Sandra Mak  
CEO, A-World Consulting

---

### 1000 hr. – 1100 hr. Lecture 4: “From No-idea Towards Marketable Products - Engineering and Business Integration”

(JCA)

Prof Lau, Alan K T  
Professor of HKPolyU  
EngNow Programme Manager

---

### 1100 hr. – 1115 hr. Break

---

### 1125 hr. – 1215 hr. Lecture 5: “Discovering Success Through High Performing Teams”

(JCA)

Mr Andrew Webster  
IMechE Council Member

---

### 1215 hr. – 1345 hr. Lunch

---

### 1345 hr. – 1515 hr. Forum 3: “Roles of Global Engineering Leaders”

(JCA)

Chaired by Ir Dr Tso, Che-Wah

1. Ir Chew, Tai-Chong, Projects Director, MTR Corporation Limited
2. Ir Chung, Colin C L, Executive Director, Building, China Region, Parsons Brinckerhoff
3. Ms Carolyn Griffiths, Chief Inspector, Rail Accident Investigation Branch, UK
4. Mr Kenny Tang, Group Director Corporate Development, Hong Kong Aircraft Engineering Company Limited
5. Ir Ian Whitton, Executive Director and Sector Director for Railway in Asia, AECOM
6. Ir Conrad Wong JP, Vice Chairman, Yau Lee Holdings Limited

---

### 1515 hr. – 1535 hr. Break

---

### 1535 hr. – 1700 hr. Forum 4 “Future Engineering Leaders – What Does it Mean?”

(JCA)

Chaired by Prof Wu, Po-Chi

1. Ms Belinda Herden, IMechE Oceania Region Young Member Representative
2. Ir Stephen Lau, VP Executive of HK Computer Society
3. Dr Satesh Namasivayam, IMechE South East Asia Region Young Member Representative
4. Mr Marcus Nicholls, IMechE Young Member Board
5. Mr Tsang, Wing-Hay, IMechE North East Asia Region Young Member Representative
6. Mr Pranjal Verma, IMechE South Asia Region Young Member Representative
7. Mr Andy Webster, IMechE Council member

---

### 1700 hr. – 1710 hr. Closing Remark

(JCA)

Prof Lau, Alan K T  
EngNow Programme Manager



# **INSTITUTION OF MECHANICAL ENGINEERS**

**Institution of  
MECHANICAL  
ENGINEERS**

**The Institution of Mechanical Engineers is today one of the world's fastest growing professional engineering institutions. Headquartered in London, we have operations around the world and members in over 140 countries. Our 105,000 members work at the heart of the most important and dynamic industries, including aerospace, automotive, oil and gas, energy and nuclear.**

With a 165-year heritage supporting us, today's Institution is a forward-looking, campaigning organisation. By working with leading companies and universities, we create and share knowledge to provide government, businesses and the public with fresh thinking and authoritative guidance on all aspects of mechanical engineering.

We truly believe we can improve the world through engineering. The Institution finds and nurtures new talent, helping engineers build their careers and take on the challenges that, when solved, will make a difference to all of us.

In order to improve the world through engineering we are committed to promoting worldwide standards of engineering excellence and supporting the engineering community to deliver this. Professional registration is one of the cornerstones of the Institution. It is a globally recognised standard awarded to engineers who can demonstrate knowledge and experience at the highest levels and is a means of benchmarking engineers, whatever industry they work in. You can find out more at [\*\*www.imeche.org/membership\*\*](http://www.imeche.org/membership)

We are also here to support engineers throughout their careers and life long learning.

Engineers are constantly learning and improving their skills to stay at the cutting edge of industry. Not only will this aid their contribution to engineering, but it helps to get the most out of their careers. To support, the Institution provides a wide range of services for its members in training and development as well as continuous professional development.

**TO FIND OUR MORE PLEASE VISIT [\*\*WWW.IMECHE.ORG\*\*](http://WWW.IMECHE.ORG)**

**Improving the world through engineering**



## **Congratulatory Message**

- ▲ **Permanent Secretary for Development (Works),  
HKSAR Government**
- ▲ **Deputy Head of Mission,  
British Consulate General, Hong Kong**
- ▲ **IMechE President**
- ▲ **HK PolyU President**
- ▲ **Chairman, EngNow Steering Committee**







### **Message from Permanent Secretary for Development (Works) Development Bureau, HKSAR Government**

---

Firstly, I thank and congratulate the Institution of Mechanical Engineers (IMechE) in gathering many stellar engineers and leaders in this Conference to share their successful experience. I also congratulate all participating young engineers across Asia Pacific in making the right decision in joining this Conference to get an insight on how to become good engineers and leaders.

Young engineers will be our successors in shaping our future world. Coupled with growing population and accelerating urbanization, the world is facing problems such as dwindling resources and climate change. We need a global collaborative effort to face the challenges in association with the rising demands on all fronts including energy, water, land, infrastructures, preservation of the environment and prevention of natural hazards. The acronym of the Institution provides the clue: **“I-Mech-E”** – the left and right hands to **Meet the Challenges** are **Innovation** and **Excellence**. Engineers should equip ourselves as leaders in promoting innovation and creativity while striving for technical and professional excellence in order to develop the world in a sustainable manner.

I wish the Conference every success, and all participants a fruitful experience.

**Ir Wai Chi-Sing**  
Permanent Secretary for Development (Works),  
Development Bureau, HKSAR Government

---

**“YOUNG ENGINEERS WILL BE  
OUR SUCCESSORS IN SHAPING  
OUR FUTURE WORLD.”**

---





**Message from  
Deputy Head of Mission  
British Consulate General, Hong Kong**

---

Congratulations to IMechE on launching this important initiative in Asia. There is an old saying that the difference between scientists and engineers is that scientists ask questions while engineers provide answers. Increasingly, engineers are being asked to provide more than technical solutions; they need to play a leading role in assessing the environmental, social, political and economic advantages and disadvantages of various courses of action. I believe that this conference will help to equip the engineers of the future to take on leadership roles to the benefit of all in society.

Many thanks to all the partners and sponsors who have made this inaugural event possible. I look forward to a successful conference as the first of many to come.

**Paul Lynch**  
Deputy Head of Mission,  
British Consulate General, Hong Kong

---

**“ENGINEERS NEED TO PLAY A  
LEADING ROLE IN ASSESSING THE  
ENVIRONMENTAL, SOCIAL,  
POLITICAL AND ECONOMIC  
ADVANTAGES AND DISADVANTAGES  
OF VARIOUS COURSES OF ACTION”**

---



## Message from IMechE President

---

Dear Institution members and guests of the first EngNow Asia Pacific Initiative.

It is my pleasure to welcome you to Hong Kong for the first initiative of its kind that the Institution and its volunteers have hosted.

Developing engineers today need to be multi-faceted in their approach to their engineering careers. This exciting event was born from a desire to help engineers at the start of their careers acquire the non-technical skills – such as leadership – that they will need to succeed throughout their working lives.

Our network of volunteer members is the foundation of the Institution's growing success worldwide, and I would like to express my congratulations to the large number of volunteers, delegates and attendees that have made this impressive event possible. The Institution could not succeed without the hard work, dedication and vision that is so perfectly embodied by this initiative.

I am very pleased that the Institution has had the opportunity to be a part of this event. I truly believe in the influence and excitement of our profession, and the importance of doing what we can to develop the next generation of world-leading engineers. I am sure you will all be 'proud to be an engineer'.

I wish you every success for your future endeavours, and am confident that the Institution can support you every step of the way.

Patrick Kniveton BSc (Hons) MBA CEng FIMechE FIET  
President,  
Institution of Mechanical Engineers

---

**“DEVELOPING ENGINEERS TODAY  
NEED TO BE MULTI-FACETED IN  
THEIR APPROACH TO THEIR  
ENGINEERING CAREERS”**

---





## **Message from President The Hong Kong Polytechnic University**

---

It gives me great pleasure to welcome you all to the EngNow Young Leadership Conference, co-organized by the Institution of Mechanical Engineers – North East Asia Region, the British Consulate-General Hong Kong and The Hong Kong Polytechnic University.

Over the past two decades, the engineering industry in the Asia-Pacific region has been going through dramatic changes, resulting in a growing demand for a new generation of engineers equipped with multi-disciplinary knowledge and skills.

Themed “The importance of leadership in business and the qualities that make good leader”, this timely conference provides an excellent platform for young engineers from across Asia Pacific to hone their skills as future leaders in the field through interaction with engineering professionals, academics, policy makers and business leaders.

I would like to extend my appreciation to the Conference Steering Committee for their commendable efforts in staging this important event. I wish all the participants an inspiring and rewarding experience.

**Prof Tong, Timothy W.**  
President,  
The Hong Kong Polytechnic University

---

**“A GROWING DEMAND FOR A NEW  
GENERATION OF ENGINEERS  
EQUIPPED WITH  
MULTI-DISCIPLINARY  
KNOWLEDGE AND SKILLS”**

---





## **Message from Chairman EngNow Steering Committee**

---

It has been a real privilege for me to chair the Steering Committee for EngNow. The concept was only initiated about 18 months ago during discussion at our International Strategy Board and it gives me great pleasure in seeing it come to fruition. We see this as a very important event for the Institution and we plan for it to be the first of many.

Engineering is a challenging and rewarding career and the young engineers attending will benefit through involvement in competition with young engineers across the Asia Pacific Region and interaction with high profile engineering leaders. This will enhance their own competencies and give them valuable experience.

The effort put in by our own members in organising the event has been quite exceptional and I have really enjoyed working with them over the past 18 months. To me this is what our Institution is all about.

**Prof Stuart Cameron MBE**  
**Chairman,**  
**EngNow Steering Committee**

---

**“ENGINEERING IS A CHALLENGING  
AND REWARDING CAREER”**

---



# Keynote

## ▲ **Keynote address**

**Global Leaders Take Innovation to the World**

## ▲ **Keynote speech**

**International Leadership in  
the Public and Private Sector**

**Engineers and Leaders in Common**







**Ir Wai, Chi-Sing**  
**Permanent Secretary for Development (Works)**  
**Development Bureau, HKSAR Government**

## **Keynote Address - “Global Leaders Take Innovation to the World”**

The idea of global leadership is a relatively new one.

In recent decades, two processes have taken place that changed the way we see the world and our place in it. They are:

- 1) The increase in the speed of international communication
- 2) The globalisation of trade and services.

Once we look at our world in terms of distances and geographical divides - we now see it as a global village. A new generation has been brought up with this vision, and global leaders have emerged in its midst. These leaders have a comprehensive worldview and an international outlook to enable them to identify quickly global trends or issues and to act decisively in response.

Some global issues we face today are unfortunately serious threats to our very existence. Depletion of resources, global warming and extreme climate change are some of the issues that affect every region in the world. Engineers are best placed to take the lead in tackling them, because we have the technical knowledge and a hunger for the resolution of problems.

There are many ways that engineers can participate in combating those global threats. Young engineers, in particular, should be prepared to take more prominent roles in these activities. It is important that they equip themselves to prepare for leadership duties and responsibilities. They must first develop the courage to lead and to innovate.

## **BIOGRAPHY**

Ir Wai Chi-Sing obtained his first degree in civil engineering from the University of Hong Kong, and his master degree in transportation engineering from the Purdue University in the United States. He has professional qualifications in civil, structural and geotechnical engineering.

Ir Wai joined the Hong Kong Government as an Assistant Engineer in August 1980, and since then his career has been closely associated with the development of Hong Kong's infrastructure development. He served in the Transport Department, the former Territory Development Department, the Highways Department, and the Works Branch of the former Environment, Transport and Works Bureau. He was the Director of the Highways Department from November 2006 to June 2010 and has been appointed as Permanent Secretary for Development (Works) since June 2010, responsible for overseeing the capital works programme of the Hong Kong Government.





**Mr Paul Lynch**  
**Deputy Head of Mission,**  
**British Consulate General, Hong Kong**

## **Keynote Speech:** **“International Leadership in the Public and Private Sector”**

In an increasingly integrated world, the success of projects and policies often depends on collaboration between industry, academia and government, frequently across international boundaries. This requires of leaders an understanding of the different drivers in public and private sector organisations, and of differences in how leadership manifests itself in different cultures. Although all leaders will have to consider a number of the same factors, including vision, strategy, implementing change, influencing stakeholders, developing people and teams, identifying and managing risk, and measuring success, the way that they do so will vary significantly according to the type of organisation and the cultural context in which they are working.

## **BIOGRAPHY**

Paul Lynch joined the Diplomatic Service in 1999 following policy jobs in the Home Office and Cabinet Office in London. He took up appointment as Deputy Head of Mission, and Director for Trade and Investment, British Consulate General, Hong Kong, in July 2011.

Before Hong Kong, Paul served as Her Majesty's Consul General, Houston from August 2007 to July 2011. Previously he served as HM Consul General, Osaka, Japan (2005-2007), Commercial Consul West Japan (2002-2007), and as First Secretary, Science and Technology in the British Embassy Tokyo (1996-2000).





**Prof Stuart Cameron, MBE**  
**Chairman,**  
**EngNow Steering Committee**

## **Keynote Speech:** **“Engineers and Leaders in Common”**

The background to the leadership camp and why the emphasis is on leadership will be highlighted. It is considered that leadership comes more readily to engineers (management may naturally follow) and the need for companies to have an organisation structure to recognise engineering leaders and technical authorities on an equal basis to the management structure will be discussed. Finally the attributes of what makes a good engineering leader will be covered based on the presenter's extensive engineering experience.

## **BIOGRAPHY**

Recently retired as Chief Engineer with Doosan Babcock with continuing involvement in various ASME and ISO Committees

Visiting Professor at University of Strathclyde

Past Vice President of IMechE and chair of International Strategy Board

Awarded an MBE in New Years Honours list 2011 for services to mechanical engineering.



## **Forum 1: View for Leaders — How Different and How Common We Are**

▲ **Panel Chair**  
**Ir Edmund Leung**

▲ **Panellists**  
**Prof Stuart Cameron, MBE**  
**Ir James Kwan**  
**Mr Paul Lynch**  
**Ir Alfred Sit**  
**Mr Rick Truscott**  
**Ir Yuen, Sui-See**

(in alphabetical order)





**Ir Edmund Leung**  
**Chief Officer, KCRC**  
**Past Chair, IMechE HK Branch**



## **View for Leaders – How Different and How Common We Are**

This Forum, with six renowned leaders from various industries and from public services as Panellists, will provide a unique opportunity to air their views on what are the key features of a leader, today and bygone years, in Hong Kong and in Britain.

The vast experience of these Panellists, and their profound knowledge and long experience related to the mechanical engineering industry, will facilitate most insightful and visionary exchange of views on the salient characteristics and qualities of a leader, and how it had developed over the years, both locally and internationally, hopefully to serve as a model for best practice for reference to budding leaders of our industry.

## **BIOGRAPHY**

Edmund Leung is a veteran mechanical engineer with broad-based experience covering power, manufacturing and construction industries.

He was the first Chairman of the IMechE Hong Kong Branch and a Past President of The Hong Kong Institution of Engineers.

Subsequent to his retirement from his engineering related work, he was appointed Chief Officer of Kowloon-Canton Railway Corporation, focussing on railway asset management.

He had served in many public services including the Energy Advisory Committee, Airport Authority and Town Planning Board.

He was conferred an OBE in 1996, appointed as Justice of the Peace in 1997, and awarded a Silver Bauhinia Star in 2009.





**Prof Stuart Cameron, MBE**  
**Chairman, EngNow Steering Committee**

## BIOGRAPHY

Recently retired as Chief Engineer with Doosan Babcock with continuing involvement in various ASME and ISO Committees.

Visiting Professor at University of Strathclyde

Past Vice President of IMechE and chair of International Strategy Board

Awarded an MBE in New Years Honours list 2011 for services to mechanical engineering.



**Ir James Kwan**  
**Senior Advisor,**  
**The Hong Kong and China Gas Company Limited**

## BIOGRAPHY

Mr James Y C Kwan gained an honors degree in Mechanical Engineering at the University of Hong Kong in 1973; he obtained a Master of Business Administration from the Chinese University of Hong Kong in 1982; and he was conferred the Honorary Fellowship by the Hong Kong University of Science and Technology in 2011.

Mr Kwan joined the Engineering Division of The Hong Kong & China Gas Company Limited in 1975 and was promoted to General Manager – Engineering in October 1989. He was appointed to Executive Director & Chief Operating Officer in January 2003. He was Deputy President of Towngas International Company Limited, Deputy President of Hong Kong & China Gas Investment Limited, and Director of the Group's joint venture companies in China until retirement on 31 January 2013. He is currently the Director of Towngas China Company Limited and Senior Adviser of The Hong Kong & China Gas Company Limited.

Mr Kwan is well known for his contributions to the engineering profession. He is currently a member of Vocational Training Council, Transport Advisory Committee, Construction Industry Council, the Governing Council of the Hong Kong Quality Assurance Agency, and the Standing Committee on Disciplined Services Salaries and Conditions of Service of the Hong Kong Special Administrative Region. He was the President of the Institution of Gas Engineers and Managers, UK in 2000/01 and the President of the Hong Kong Institution of Engineers in 2004/05.





**Mr Paul Lynch**  
**Deputy Head of Mission,**  
**British Consulate General, Hong Kong**

## BIOGRAPHY

Paul Lynch joined the Diplomatic Service in 1999 following policy jobs in the Home Office and Cabinet Office in London. He took up appointment as Deputy Head of Mission, and Director for Trade and Investment, British Consulate General, Hong Kong, in July 2011.

Before Hong Kong, Paul served as Her Majesty's Consul General, Houston from August 2007 to July 2011. Previously he served as HM Consul General, Osaka, Japan (2005-2007), Commercial Consul West Japan (2002-2007), and as First Secretary, Science and Technology in the British Embassy Tokyo (1996-2000).



**Ir Alfred Sit,**  
**Deputy Director/Regulatory Services,**  
**Electrical and Mechanical Services Department**

## BIOGRAPHY

Ir Alfred W H SIT is Deputy Director of the Electrical & Mechanical Services Department (EMSD) of the HKSAR Government. EMSD, being a government department, plays a dual role in Hong Kong. Firstly, it acts as a law enforcement department with regard to electricity, gas, railway, lift and escalator safety, and a number of related E&M safety areas. Its second role is to provide E&M engineering solutions and services to other government departments and public sector organizations in Hong Kong. EMSD is also charged with supporting government initiatives in promoting energy efficiency and conservation in Hong Kong.

Ir Sit has been working in the electrical and mechanical engineering field for more than 30 years. He is active in the activities of the learned societies. He has served as the President of the Hong Kong Institute of Facility Management, the Chairman of the Biomedical Division and the Honorary Secretary of the Nuclear Division of the Hong Kong Institution of Engineers.





**Mr Rick Truscott,  
Director (Generation),  
CLP Power Hong Kong Limited**

## BIOGRAPHY

Mr Truscott is the Director - Generation for CLP Power Hong Kong. He has worked in a variety of roles covering development, operations, financing, maintenance and construction in the power sector over the last 25 years.

Previously, he was Senior Vice President for CLP Southeast Asia. From 2001 until 2009, Mr. Truscott served as Managing Director of a 1,434MW coal-fired plant from initial business development through financing and into commercial operations.

Mr Truscott is also qualified as an engineer for a US nuclear-powered submarine based upon his assignment aboard the USS Whale (SSN 638).



**Ir Yuen, Sui-See  
Director of Operations,  
The Hongkong Electric Company Limited**

## BIOGRAPHY

Mr Yuen has over 30 years of experience in the electricity industry. He holds a Bachelor of Science degree and a Master of Science degree in Engineering. He is a Chartered Engineer in UK, a Registered Professional Engineer in HK and a Fellow of the HKIE. He had served in the HKIE as a Council Member, Chairman of the Electrical Division and Chairman of the Electrical Discipline Advisory Panel. He is now a member of the HKU Electrical and Electronic Engineering Departmental Advisory Committee and a Director of World Vision HK.



# WHAT DO YOU THINK ENGNOW REPRESENTS?

Institution of  
**MECHANICAL  
ENGINEERS**

Asia Pacific Regions



## ENGNOW REPRESENTS

**"THE FUTURE OF ENGINEERING IS NOW".**

It is a 360 degree training programme for tomorrow's leading engineers and supporting the development of young engineers. To become a world-class engineer in the 21st century, it is no longer sufficient to be an expert in your field. Today's top engineers must also demonstrate leadership, communication skills, problem solving and critical thinking.

The crux of the EngNow logo design is the g/o letterform that symbolizes the inextricable link between engineering and the era in which it is practiced. The logo is clean and modern, built with geometric shapes and smooth curves. The strong and even strokes represent the strength and precision of engineering, while the gentle curved shapes represent the soft skills required by today's well-rounded engineers.

TO FIND OUT MORE ABOUT ENGNOW - 360 LEADERSHIP TRAINING,  
PLEASE VISIT [WWW.NEARYOU.IMECHE.ORG](http://WWW.NEARYOU.IMECHE.ORG)

**Improving the world through engineering**



## **Forum 2: Be a Leader of Yourself— What is Needed to Become a Successful Entrepreneur**

▲ **Panel Chair**  
**Ir Dr Otto Poon**

▲ **Panellists**  
**Ir Daniel Cheng MH JP**  
**Mr Tommy Chow**  
**Ir Derrick Pang**  
**Mr Rex Wong**  
**Prof Wu, Po-Chi**  
**Dr Daniel Yip**

(in alphabetical order)





**Ir Dr Otto Poon, BBS, OBE,  
Chairman of Analogue Holdings Limited**



## **Be a Leader of Yourself – What is Needed to Become a Successful Entrepreneur**

To be a successful entrepreneur is at least 50 percent art and 50 science, and at most 50 percent hard work and 50 percent luck.

To work on the 50 percent under our control, one needs to continue to build up all round competency against ever changing technological and business environment.

To identify business opportunities, one has to think outside their own interests. Engineers love their own ideas to the extent of ignoring customers' needs.

To be successful in any business, one has to satisfy certain market needs. To be truly successful, one has to create needs and devise ways to satisfy these new needs.

We have to deliver customer satisfaction; customer satisfaction first and financial rewards will follow. Never think of profit first and customer satisfaction second, this will guarantee failure.

Developing a new business is difficult; sustaining success is more challenging. Technology, market and economy are changing. New market needs arise, existing needs disappear. Business strategy must be dynamic to cater for ever changing needs of the market, and peaks and troughs of business cycles.

There will be moments of joy, but there are more frustrations. Perseverance is only way to be a successful entrepreneur.

## **BIOGRAPHY**

Ir Dr Poon is a CEng. He established the Analogue Group of Companies in 1977 which has since developed into a leading international E&M and environmental engineering group employing over 2,500 staff with turnover of HK\$4 Billion.

He had served in, among others, Advisory Council on Environment, Energy Advisory Committee and Council for Sustainable Development. He is the Past President of HKIE and currently President of Hong Kong Federation of Electrical and Mechanical Contractors.

He was awarded OBE and BBS and was conferred University Fellowship by PolyU, Hon. DTech by Coventry University and Honorary Fellowship by University of Central Lancashire.



**Ir Daniel M Cheng, M H, JP**  
**Managing Director,**  
**Dunwell Enviro-Tech (Holdings) Ltd.**  
**Deputy Chairman,**  
**Federation of Hong Kong Industries**



## BIOGRAPHY

Ir Daniel M Cheng, MH, JP is the Managing Director of Dunwell Enviro-Tech (Holdings) Ltd. He is the Deputy Chairman, the Chairman of the Group 26 (Environmental Industry) of the Federation of Hong Kong Industries, Founding President of Hong Kong Environmental Industry Association, Board Member of Business Environment Council, Awardee Member of Hong Kong Young Industrialist Council. Ir Cheng was appointed by HKSAR Government to serve as Member of Advisory Committee on Water Resources and Quality of Water Supplies, Member of Economic Development Commission (Working Group on Manufacturing Industries, Innovative Technology, and Cultural and Creative Industries).



**Mr Tommy Chow**  
**Director,**  
**Everbright Property Investment Consultancy Ltd.**

## BIOGRAPHY

Mr Tommy Tat Hing Chow has started his career since 1980s. In 1995, he became partner of Everbright Property Investment Consultancy Limited. During his partnership, he made several valuable property transactions. His versatility also brings him into investment in Japanese Chain Restaurant, a garment factory in mainland China, as well as a high-class Chinese Cuisine in 2004.

Academically, he has been not only granted the Master Degree in Business Administration from University of Wales, Newport, but also a Vice Chairman of University of Wales, Newport, Alumni Association. Politically, he is a member of Zhao Qing City PCC, Guangdong Province; socially, a Vice President, Scout Association of HK, Shau Kei Wan District and as a businessman. He is an active member of HK SME Development Federation Ltd.



**Ir Derrick Pang**  
**Deputy Chairman,**  
**Chun Wo Development Holdings Limited**



## BIOGRAPHY

Mr Derrick Pang graduated from the University of California, Berkeley in 1997 with a Bachelor of Science degree in Civil and Environmental Engineering and obtained a Master of Engineering degree in Geotechnical Engineering from Massachusetts Institute of Technology in 1998 and a Master degree in Business Administration from The Chinese University of Hong Kong in 2007. Derrick is a member of The Institution of Civil Engineering, United Kingdom and The Hong Kong Institution of Engineers and a Registered Professional Engineer for the State of California, U.S.A. He has over 3 years of geotechnical design experience in the United States and over 10 years of construction experience in Hong Kong. Derrick joined Chun Wo Development Holdings Limited in 2001 and holds several directorships in certain subsidiaries of the Group. He was appointed as Deputy Chairman of Chun Wo in 2010.



**Mr Rex Wong**  
**Executive Director & Head of Business Development,**  
**Kum Shing Group**

## BIOGRAPHY

Rex is a locally born Architect registered in the United States. He gained his professional experiences in Madrid and New York in addition to Hong Kong. Currently, he is the Executive Director & Head of Business Development at Kum Shing, the 50-year-old engineering and construction business group. In addition, Rex recently founded a real estate development company in the Pearl River Delta region focusing on developing quality and sustainable properties. Other than business and practice, Rex also serves in leadership or active role in numerous government advisory bodies, trade and community associations in Hong Kong and Mainland China.





**Prof Wu, Po-Chi**  
**Adjunct Professor**  
**School of Business and Management,**  
**School of Engineering, HKUST**

## BIOGRAPHY

As an Adjunct Professor in both the School of Business and Management and the School of Engineering at HKUST, Dr Wu is initiating programs in innovation and entrepreneurship at all levels: undergraduate, graduate, and professional training for corporate management. Previously, he was a Visiting Professor at Peking University. His experience of more than 30 years as an international venture capitalist and entrepreneur based in Silicon Valley has shaped a unique perspective and deep insight.

He has a PhD from Princeton University (1972) and a BA from the University of California at Berkeley (1966).



**Dr Daniel Yip**  
**Managing Director,**  
**G.E.W. International Corporation Limited**  
**President of HKEAMA**

## BIOGRAPHY

Dr Daniel C Y Yip is the Managing Director of the G.E.W. International Corporation Limited. G.E.W. is a small electrical appliances manufacturer with both OEM, ODM and OBM business with over 1200 employees. Dr Yip has over 25 years' experience in the electrical appliances manufacturing. G.E.W. is pioneer in manufacturing and marketing high end coffee machine and related accessories. Dr Yip holds a Bachelor Degree in Mechanical Engineering and a Master Degree in Business Administration from Rutgers University in USA in 1987 and an Engineering Doctorate Degree from University of Warwick in 2008. Dr Yip is working closely with local universities to develop state of the art technologies for new products. Dr Yip has been appointed as Industrial Fellow from University of Warwick in 2013.





# WHAT KIND OF ENGINEER ARE YOU



Institution of  
**MECHANICAL  
ENGINEERS**

**WITH THE INSTITUTION,  
YOUR KNOWLEDGE IS VALUED,  
RECOGNISED AND BENCHMARKED.**

**REGISTER  
WITH A WORLD-CLASS  
PROFESSIONAL ENGINEERING  
INSTITUTION.**

**[www.imeche.org/membership](http://www.imeche.org/membership)**

**Improving the world through engineering**



# Lecture

## ▲ **Lecture 1**

**How can Leadership be Learned?**

## **Lecture 2**

**Bring Your Point Out with Power**

## **Lecture 3**

**Courage to Lead: How to Build Courage?**

## **Lecture 4**

**From No-idea Towards Marketable Products –  
Engineering and Business Integration”**

## **Lecture 5**

**Discovering Success Through  
High Performing Teams**







**Prof Wu, Po-Chi**  
**Adjunct Professor**  
**School of Business and Management,**  
**School of Engineering, HKUST**

## How can Leadership be Learned?

How do young engineers learn to become leaders? Companies today need their engineering staff to be able to take on bigger projects, to have broader knowledge and skills to deal with business as well as technical issues. A common complaint in industry is that there are far too few qualified candidates for leadership positions. Reflecting this reality, professional societies and companies are encouraging universities all over the world to provide courses in management, marketing, negotiation, communication, and basic finance, specifically for engineering students, in addition to traditional business school programs. Skills in these areas are critical for shaping the entrepreneurial mindset, which is just as important for leadership in major corporations as in start-ups. A final priority is lifelong learning, for continuing professional education, even for senior engineers with 20 years of experience and more. The accelerating rate of change in the world means increasingly complex problems require new kinds of practical solutions from engineers. Who is up to this challenge?

## BIOGRAPHY

As an Adjunct Professor in both the School of Business and Management and the School of Engineering at HKUST, Dr Wu is initiating programs in innovation and entrepreneurship at all levels: undergraduate, graduate, and professional training for corporate management. Previously, he was a Visiting Professor at Peking University. His experience of more than 30 years as an international venture capitalist and entrepreneur based in Silicon Valley has shaped a unique perspective and deep insight.

He has a PhD from Princeton University (1972) and a BA from the University of California at Berkeley (1966).





**Mr Donald Yee**  
**Champion Speaker of Toastmaster**

## Bring Your Point Out with Power

Being able to present well is one of the most important communication skills in the business world today. It allows the individual to stand-out and be recognized as well as bringing success to his/her respective organization as a whole.

This lecture is designed specially to help participants deliver their presentations effectively and aims to achieve the following objectives:

- Present information, thoughts & ideas confidently and persuasively to a group of listeners.
- To enhance the participants' control of the situation to ensure that meeting and presentation objectives are clear and consistently met.
- Greater flexibility to adapt to a broad range of roles, objectives and audience ensuring delivery of only relevant information that will achieve desired business objectives.

At the end of the lecture, each participant will:

- Have a more flexible approach to presenting with an increased range of delivery skills
- Be able to adapt their presentation style to suit different audience and situations to have a far greater level of comfort and control over themselves and the presentation environment

## BIOGRAPHY

Donald is an engineer by profession and has been a Toastmaster for over 10 years. He engages himself avidly in public speaking where he was the first speaker from Hong Kong to grace the international contest stage in the World Championship run-off. He also holds the East Asian record for attaining the highest honors at an "International Prepared Speech Contest" and is the only speaker from Hong Kong to have won the Asian Impromptu speech contest.

His motto is, "to always persevere and pursue your dream vigorously."

Donald has conducted "Presentation" and Public-speaking training workshops to government utilities, banks, tertiary institutions, Rotary clubs and various reputable professional institutions & societies.





**Mrs Sandra Mak**  
**CEO, A-World Consulting**

## **Courage to Lead: How to Build Courage?**

From the typical fair and square, quiet and reliable professional engineer, we look at how he/she may delve deep inside himself/herself to bring out the leader in him/her. Engineers have been helping to build the world. When the latter is at risk of bursting, when sustainability is on the line, engineers have to be brave enough to seek out, embrace and lead change.

What is keeping most of us from doing so? Is fear the culprit or just lack of technical training in areas such as communication – the skill to show and tell, to touch the people, as we need to have the ability to bring others with us in managing change.

Is leadership in the engineering profession different from that in other professions and arena? Is it inborn or can be honed and learnt? How can we start building courage from a young age?

The lecture is an interactive session of joint exploration, at the end of which, hopefully, all participants will feel up to the challenge, and will dare to lead.

## **BIOGRAPHY**

Sandra Mak is a leading communication and management consultant in Hong Kong. She is also a respected contributor to professional/community services, as member of the Open University Council and as Vice President, HK Women Professionals & Entrepreneurs Association (Chair, Environmental Committee) and Vice Chairman, HK Breast Cancer Foundation.

Before starting her own consultancy, Sandra was Head of Corporate Relations, CLP Holdings, and board director of a few CLP subsidiaries.

Sandra holds a BA (Hons) degree, HKU, and has completed the Advanced Management Programme at Harvard Business School. She is also an Accredited Mediator.





**Prof Lau, Alan K T**  
**Professor of HKPolyU**  
**EngNow Programme Manager**

## **From No-idea Towards Marketable Products - Engineering and Business Integration**

Over the last decade, recruiting product designers with a thoughtful design, engineering and business mindset has become very difficult. From the academic point of view, it is relatively difficult to cultivate a graduate with the competences for so many professions within 3 to 4 years. It ultimately induces a problem that the graduate cannot get into deep knowledge on his/her discipline. From the industry's point of view, the University is always like an ivory tower, all knowledge they provide to the students are delinked with the real world. There is certainly an urgent need on how to link up this gap to avoid any mismatch of expectations between the education and industry sectors. In fact, designing an innovative product requires any one of two major factors; one is luck while another is the approach. For the former one, scientific innovation/invention cannot be made intentionally. Normally, most of Nobel prize winners accidentally discovered a new phenomenon through experimental processes, and subsequently made a breakthrough. In such circumstances, we cannot always wait or plan for the new discovery to help revolutionize the product development industry in the world. For the latter, it requires the right process and approach to produce the right product to market which can hit the market need and customer's buying intention. Therefore, how to integrate design, engineering and a business mindset into the product design process and academic programme is the key to produce all-round designers and engineers to help the industry making an impact of their products to the community. Therefore, the latter one is a controllable factor that we can now start on to design and build marketable products. In this lecture, philosophical study and real-life examples will be discussed to provide young engineers with the right thinking approach for new product development starting from zero-ideas.

## **BIOGRAPHY**

Professor Lau was a craft apprentice in the aircraft maintenance engineering industry for 4 years. He then received his BEng and MEng in Aerospace Engineering and PhD in Mechanical Engineering in RMIT University and PolyU, respectively. In the past ten years, he has received numerous international teaching and research awards. He was the first educator and researcher in Hong Kong to receive the Ernest L. Boyer International Award for Excellence in Teaching, Learning and Technology (USA) in 2009 and be elected as Member of European Academy of Sciences (2007), respectively. Since 2005, he has initiated an industry-engaged outcome-based teaching approach to support a product and engineering design programme to enhance the student's learning ability and competitiveness in the global product design and engineering industry.





**Mr Andrew Webster**  
**IMechE Council Member**

## **Discovering Success Through High Performing Teams**

The continued success of the engineering leader is increasingly dependent on the way in which they interact, influence and work together with teams. In past generations leaders excelled by reaching the top and directing. In today's flat organisations leaders create, shape and nurture teams of highly talented individuals, and are able to multiply their own skill set through these high performing teams. Sharing his own personal experience as an engineering leader in Shell for the past 9 years, Andrew will reflect on the important qualities that unlock the value in high performing teams. He will take a practical based look at some of the critical orientations that will enhance your own performance in these teams. Highlighting a few elements, from the many high performing team models that exist, he will look at why these have been particularly impactful in his career, and how you can use them in your own work environment.

## **BIOGRAPHY**

Andrew Webster is a chartered engineer from Imperial College London, with over nine years experience in the energy sector, currently working for Shell as a Business Advisor for their European Manufacturing business. He has previously worked for Shell as a reliability manager at their refinery in Denmark, as a rotating equipment engineer at Chemical plants in the Netherlands, and as an LNG rotating equipment consultant in the Netherlands. He is a member of the Institution of Mechanical Engineers Council, and previously the European Young Member representative on the International Strategy Board and the Benelux branch. He now chairs the Council Coordinating Committee.



## **Forum 3: Roles of Global Engineering Leaders**

### **▲ Panel Chair** **Ir Dr C W Tso**

### **▲ Panellists** **Ir Chew, Tai-Chong** **Ir Chung, Colin C L** **Ms Carolyn Griffiths** **Mr Kenny Tang** **Ir Ian Whitton** **Ir Conrad Wong JP**

(in alphabetical order)





**Ir Dr Tso, Che-Wah**  
**Adjunct Professor, City University of Hong Kong**  
**Past Chairman, IMechE HK Branch**



## Roles of Global Engineering Leaders

The 1980's saw the finance-oriented professionals, adept at valuing firms and increasing the efficiency of the corporate sector through private equity, rise to leadership. In light of the on-going economic downturn particular in Europe, major corporations around the world are now seeking out the most effective means to innovate new products, services, production processes and operational efficiency to maintain and/or achieve sustainable competitive advantage [1].

Traditionally, professional engineers have the scientific knowledge, analytical mind and needed skills to develop innovative solutions for technical problems. But addressing these challenges in an ever-changing world requires engineers with leadership skill: a combination of technical know-how, entrepreneurial ability, business judgment and global perspective.

The Forum is much privileged and honored to have the following six distinguished industry leaders as Panelists to share with us their roles, experiences, challenges and best practices in leading successful corporations with overseas business operations in today's increasingly complex and competitive globalized markets.

Ir Chew, Tai-Chong, Projects Director, MTRC

Ir Chung, Colin C L, Executive Director, Building, China Region, Parsons Brinckerhoff

Ms Carolyn Griffiths, Chief Inspector, Rail Accident Investigation Branch, UK

Vice President, IMechE

Mr Kenny Tang, Group Director Corporate Development, Hong Kong Aircraft Engineering Company Limited

Ir Ian Whitton, Executive Director and Sector Director for Railway in Asia, AECOM

Ir Conrad Wong JP, Vice Chairman, Yau Lee Holdings Limited

[1] I. Sidhu & P. de Létraz, "A Model for Global Engineering Leadership", October 2012

## BIOGRAPHY

Ir Dr Tso is the Adjunct Professor of the School of Energy and Environment and Programme Leader of BEng (Hons) in Energy Science and Engineering programme at the City University of Hong Kong. He was an engineer by training and a former General Manager (Projects) of the Hongkong Electric Co. Ltd. responsible for the execution of power generation and transmission projects. He has over 35 years working experience in energy and power industries and has a long standing interest in electricity generation and fuel-mix policy. He is a Past Chairman of the Institution of Mechanical Engineers Hong Kong Branch.





**Ir Chew, Tai-Chong**  
**Projects Director,**  
**MTR Corporation Limited**

## BIOGRAPHY

T C Chew is currently the Projects Director of Hong Kong MTR Corporation Limited. T C has worked in the rail transit industry in the United Kingdom, Singapore, Hong Kong and overseas for over 35 years. He has held senior position in both contractor and client based organization on rail projects implementation over the last 15 years. He is a member of the Hong Kong Construction Industry Council and chaired its procurement committee. He is a Chartered Engineer, a fellow of the Royal Academy of Engineering, Hong Kong Academy of Engineering Sciences and a number of professional institutions in the United Kingdom and Hong Kong.



**Ir Chung, Colin C L**  
**Executive Director, Building, China Region**  
**Parsons Brinckerhoff**

## BIOGRAPHY

Ir Chung graduated from the City University in London in Mechanical Engineering and he also obtained his Master degree in Building Services in University of Hong Kong. Ir Chung has over 25 years of experience in building services systems design, energy and carbon management, green and sustainable building design. Colin is an Executive Director of Parsons Brinckerhoff Asia and he is a Chartered Engineer and fellow member of the Institution of Mechanical Engineers, and many international and local institutions. Currently, Ir Chung is the President of Hong Kong Association of Energy Engineers.



**Ms Carolyn Griffiths**  
**Chief Inspector,**  
**Rail Accident Investigation Branch, UK**  
**Vice President, IMechE**



## BIOGRAPHY

Educated at the University of Birmingham, UK, Carolyn is the Chief Inspector for the Rail Accident Investigation Branch (RAIB) in the United Kingdom, reporting to the Secretary of State for Transport.

Her career spans from working on the shop floor in maintenance depots to Senior Vice President in an international organisation. She has worked in manufacturing, maintenance, operations and consultancy, in the private and public sectors both in the UK and internationally.

Carolyn has served as the Chair for the Institution's Railway Division, a member of Council, and three recent Institution task forces. As well, she is leading the Institution's initiative to provide engineering training to members.



**Mr Kenny Tang**  
**Group Director Corporate Development,**  
**Hong Kong Aircraft Engineering Company Limited**

## BIOGRAPHY

Kenny Tang is currently the Group Director Corporate Development of Hong Kong Aircraft Engineering Company Limited (HAECO).

Mr Tang has been with the Swire Group for 34 years. He brings with him a wealth of experience in financial and general management. He was previously General Manager Corporate Finance and General Manager Cargo of Cathay Pacific Airways, Chief Operating Officer of Air Hong Kong and Chief Executive Officer of Hong Kong Dragon Airlines.

Mr Tang joined the HAECO Group in 2009 and was appointed as Chief Operating Officer in 2010 and Group Director Corporate Development in 2013.



**Ir Ian Whitton**  
**Executive Director and**  
**Sector Director for Railway in Asia,**  
**AECOM**



## BIOGRAPHY

Ian, an Executive Director and Sector Director for Railways in Asia with AECOM, has 27 years experience in transport infrastructure design. He is also a Past of Engineers Australia - Hong Kong Chapter. He has been based in Hong Kong for more than 20 years and he has also worked in Australia, the UK, India, Thailand, Mongolia, Indonesia, and the Middle East. He has worked as Project Manager on several complex transportation projects, specializing in railways and station design for the last 16 years. He has also worked on design of roads, container terminals, Bus Rapid Transit systems, Automatic People Mover systems, and ferry terminals.



**Ir Conrad Wong, BBS, JP**  
**Vice Chairman, Yau Lee Holdings Limited**  
**Chairman, Hong Kong Green Building Council**

## BIOGRAPHY

Ir Conrad Wong has over 25 years of construction project management experience. He is Vice Chairman of Yau Lee Holdings Limited, Managing Director of Yau Lee Construction Company Limited and Yau Lee Wah Concrete Precast Products Ltd., Vice Chairman of REC Engineering Company Limited as well as Chief Executive Officer of VHSoft Technologies Company Limited.

Ir Wong is active in public and community services. He has been appointed as the Chairman of the Hong Kong Green Building Council, the Chairman of Occupational Health and Safety Council, the Deputy Chairman of Vocational Training Council, the Member of the Antiquities Advisory Board, the Member of MPF Industry Schemes Committee as well as the Director of the World Green Building Council. In the past, Conrad served as the President of the Hong Kong Construction Association and the President of the International Federation of Asia and West Pacific Contractors' Associations and the Chairman of Pneumoconiosis Compensation Fund Board and the Member of Construction Industry Council.





# LEARNING AND DEVELOPMENT AT THE INSTITUTION OF MECHANICAL ENGINEERS.



Institution of  
**MECHANICAL  
ENGINEERS**


The Institution of Mechanical Engineers is strikingly different to other organisations offering learning and development. Working with leading companies and universities, we create and share engineering knowledge and provide government, business and the public with innovative, authoritative, impartial information. This provides us with a unique perspective on the issues facing your business, as well as the understanding and ability to devise the development programme your organisation needs to grow.

We believe we have a responsibility to provide the most up-to-date, industry-relevant training for engineers, so we offer a broad portfolio of technical, business and leadership courses to help talented technical professionals develop the skills they need to become more effective leaders.

All of our technical and leadership courses can be tailored to fit your business objectives, culture and experience levels, from graduates to senior executives. Training can be delivered at your premises, anywhere in the world, in a range of local languages.

Put simply, we offer the widest range of training programmes designed for engineers and businesses with technical people around the world.

**TO DISCUSS YOUR ORGANISATION'S LEARNING AND DEVELOPMENT REQUIREMENTS,  
PLEASE CALL US ON +44 (0)20 7304 6907 OR EMAIL [TRAINING@IMECHE.ORG](mailto:TRAINING@IMECHE.ORG)**





## **Forum 4: Future Engineering Leaders — What Does it Mean?**

▲ **Panel Chair**  
**Prof Wu, Po-Chi**

▲ **Panellists**  
**Ms Belinda Herden**  
**Ir Stephen Lau**  
**Dr Satesh Namasivayam**  
**Mr Marcus Nicholls**  
**Mr Wing-Hay Tsang**  
**Mr Pranjal Verma**  
**Mr Andy Webster**

(in alphabetical order)





# PANEL CHAIR

**Prof Wu, Po-Chi**  
**Adjunct Professor**  
**School of Business and Management,**  
**School of Engineering, HKUST**



## Future Engineering Leaders – what does it mean?

Who are the future leaders? What are they like, as people? What are their visions of the future? How will they demonstrate leadership in this increasingly complex world, where engineering talent will be more important than ever? How will they inspire future generations of engineers? What can we learn from them?

The panelists represent the breadth and diversity of young leaders who are already making a difference. They will share how they are shaping the future of engineering to improve society and the world we live in.

## BIOGRAPHY

As an Adjunct Professor in both the School of Business and Management and the School of Engineering at HKUST, Dr Wu is initiating programs in innovation and entrepreneurship at all levels: undergraduate, graduate, and professional training for corporate management. Previously, he was a Visiting Professor at Peking University. His experience of more than 30 years as an international venture capitalist and entrepreneur based in Silicon Valley has shaped a unique perspective and deep insight.

He has a PhD from Princeton University (1972) and a BA from the University of California at Berkeley (1966).





**Ms Belinda Herden**  
**IMechE Oceania Region**  
**Young Member Representative**

## BIOGRAPHY

Belinda Herden is a mechanical engineer working in the oil and gas industry in Queensland, Australia. Initially drawn to engineering by an interest in aviation, Belinda studied mechanical and aeronautical engineering. Upon graduating in 2010, Belinda began her career as an engineer at the BP Bulwer Island Refinery. The highlight of her career to date was a placement in Western Australia, as a lead engineer on a major maintenance shutdown. Building on this, she is now accountable for the execution of a sulphur unit shutdown in 2014.

Belinda is currently the Oceania Region Young Member Representative with the Institute of Mechanical Engineers. In 2012 she won the IMechE Young Member of the Year award for Member Engagement.



**Ir Stephen Lau**  
**VP Executive of HK Computer Society**

## BIOGRAPHY

Stephen K M Lau, Adviser, HP Enterprises Services (previous Chairman of EDS Hong Kong) and Immediate Past President of the Hong Kong Computer Society, was the first Privacy Commissioner for Personal Data for Hong Kong (1996-2001) with responsibility to promote and enforce compliance with The Personal Data (Privacy) Ordinance.

Mr Lau has over 40 years experience in the information technology and banking industries in both the government and private sectors. Having held a variety of senior management positions with International Computer Limited, Citicorp, EDS and the Hong Kong Government where he was Head of the Government Data Processing Agency.

Mr Lau is active in professional and community affairs. He holds chairmanships/ memberships of a number of advisory committees of the Government and universities in HK. In 1984, Mr Lau was awarded the Member of the British Empire (MBE) for his outstanding service to the community in the area of information technology. In 1986, he was made a Distinguished Fellow of the Hong Kong Computer Society. In June 2001, he was made a Justice of the Peace. In July 2009 he was elected a Fellow of the HK Institution of Engineers.

With an Adjunct Professorship at the City University of Hong Kong, Mr Lau has a bachelor's degree from the University of Manchester, a master's in computer science from London University, and has completed a senior executive program at the Harvard Business School.





**Dr Satesh Namasivayam**  
**IMechE South East Asia Region**  
**Young Member Representative**

## BIOGRAPHY

Dr Satesh Namasivayam possesses a First Class Hons Degree and a PhD in Mechanical Engineering, both degrees obtained from the University of London. He is a Chartered Engineer and a Corporate Member with the IMechE. He is also a Corporate Member with the Institution of Engineers Malaysia (IEM). He was the inaugural Chair for the IMechE Malaysia YMS, the Hon Secretary for IMechE Malaysia and is currently the YM Rep for the SEA Region. Previously a research scholar of the University of London, Satesh has won numerous awards internationally. This includes the Frederic Barnes Waldron Award and the Young Member of the Year Award for Member Engagement both being awarded by the IMechE. Satesh is the Deputy Dean of an Engineering School in a Malaysian University and runs a consulting company in the areas of Environment, Health and Safety, Green Technology and Energy Efficiency as well as Project Management in Malaysia.



**Mr Marcus Nicholls**  
**IMechE Young Member Board**

## BIOGRAPHY

Mr Nicholls grew up in Caracas, Venezuela where he pursued the International Baccalaureate prior to relocating to England for university studies. He graduated from the University of Southampton in 2009 with a MEng in Acoustical Engineering. Since graduation, he has been working for the Noise and Vibration Group of Frazer-Nash Consultancy providing guidance on noise and vibration issues and conducting field measurements and testing for the marine, rail and petrochemical industries.

Within the IMechE, Marcus is the Vice Chair of the Young Members Board. He has also been the International Strategy Board Young Members Board Representative for the past 18 months.





**Mr Tsang, Wing-Hay**  
**IMechE North East Asia Region**  
**Young Member Representative**

## BIOGRAPHY

After graduation from Imperial College London with Master of Engineering (Honour) degree in mechanical engineering, entered AMEC Oil and Gas and later CB&I UK becoming a piping stress engineer on energy projects. Now he is a mechanical engineer in Projects Division of HK Electric, responsible for the projects of delivering power generation assets.

He was a member of the IMechE Young Member Panel in London. He is now serving as Young Member Representative of North East Asia Region, co-chairman of Young Leadership Conference and an organiser of local technical visits for IMechE Hong Kong Branch.



**Mr Pranjal Verma**  
**IMechE Southern Asia Region**  
**Young Member Representative**

## BIOGRAPHY

Pranjal is a piping Engineer with over 24 years of comprehensive experience in the various phases of project design and detail engineering of upstream and downstream Oil facilities, Hydrocarbon and Petrochemical Plants, Steel Plants and cryogenic Air Separation Units with specific experience in piping material engineering. He has worked with multinational companies like Fluor, Foster Wheeler, UHDE, MECON. Involved in projects from Proposal to Commissioning and worked with global projects in multi office environment.

Pranjal completed his B.Tech from Institute of Technology, Banaras Hindu University, India. He has been associated with IMechE since 2008 when India initiative was launched. He is currently YMR of Southern Asia and Secretary of India Branch.





**Mr Andy Webster**  
**IMechE Council member**

## BIOGRAPHY

Andrew Webster is a chartered engineer from Imperial College London, with over nine years experience in the energy sector, currently working for Shell as a Business Advisor for their European Manufacturing business. He has previously worked for Shell as a reliability manager at their refinery in Denmark, as a rotating equipment engineer at Chemical plants in the Netherlands, and as an LNG rotating equipment consultant in the Netherlands. He is a member of the Institution of Mechanical Engineers Council, and previously the European Young Member representative on the International Strategy Board and the Benelux branch. He now chairs the Council Coordinating Committee.



# Advertisement





Energy that grows with you,  
generation to generation.

[www.clponline.com.hk](http://www.clponline.com.hk)



Energy for Life

CLP 中電



# Total Care for Your Aircraft from Nose to Tail

Hong Kong Aircraft Engineering Company Limited (the "HAECO Group") has been providing comprehensive aeronautical engineering and maintenance services to airlines and operators since 1950. HAECO is the only full service provider of airframe maintenance and line maintenance at the Hong Kong International Airport. Over the years, the HAECO Group has expanded its maintenance facilities to Xiamen, Jinan, Chengdu in mainland China, and Singapore. Equipped with Asia's premier hangar facilities and strong relationships with major Original Equipment Manufacturers (OEMs), the HAECO Group is dedicated to provide a full spectrum of best-in-class aircraft engineering and maintenance to our customers. Leveraging on our tremendous experience and professional excellence, we take pride in our ability to deliver the most efficient and effective solutions to meet our customers' needs.

HAECO Group companies at a glance:

- ▶ Hong Kong Aircraft Engineering Co. Ltd.
- ▶ Taikoo (Xiamen) Aircraft Engineering Co. Ltd.
- ▶ HAECO ITM Ltd.
- ▶ Hong Kong Aero Engine Services Ltd.
- ▶ HAECO Cabin Solutions, LLC
- ▶ Taikoo Engine Services (Xiamen) Co. Ltd.
- ▶ Taikoo (Xiamen) Landing Gear Services Co. Ltd.
- ▶ Singapore HAECO Pte. Ltd.
- ▶ Singapore Aero Engine Services Pte. Ltd.
- ▶ Taikoo (Shandong) Aircraft Engineering Co. Ltd.
- ▶ Taikoo Sichuan Aircraft Engineering Services Co. Ltd.
- ▶ Taikoo Spirit AeroSystems (Jinjiang) Composite Co. Ltd.
- ▶ Shanghai Taikoo Aircraft Engineering Services Co. Ltd.
- ▶ Dunlop Taikoo (Jinjiang) Aircraft Tyres Co. Ltd.
- ▶ Goodrich Asia-Pacific Ltd.
- ▶ Goodrich TAECO Aeronautical Systems (Xiamen) Co. Ltd.
- ▶ Honeywell TAECO Aerospace (Xiamen) Co. Ltd.

Contact us at [commercial@haeco.com](mailto:commercial@haeco.com)  
or visit our website at [www.haeco.com](http://www.haeco.com)





# EXCELLENCE, ALWAYS.



For more than a century, HK Electric has been the power behind Hong Kong, making Hong Kong one of the world's leading cities and financial centres.

Over the years, we have continuously improved our services, modernised our facilities and enhanced our reach as Hong Kong grows. Today, we are a global leader in terms of supply reliability, maintaining a world-class record of 99.999% and providing the energy that keeps the heart of Hong Kong beating.

Driving these efforts is our pursuit for excellence and our commitment to doing our best to serve various stakeholders in the community.

Truly, we're always on for Hong Kong.

[www.hkelectric.com](http://www.hkelectric.com)

*Heritage leads to  
innovation and progress by  
3 generations*



*A family of 2700 members to  
nurture a safe and caring work culture*



*Critical services across 18 districts to  
enhance citizen's quality of life*



[www.kumshing.com.hk](http://www.kumshing.com.hk)





## Clean Energy To Provide a Green and Sustainable Future For Generations to Come



**At Towngas, our aim is to be Asia's leading energy supplier and service provider, with an environmentally friendly focus.**

As Hong Kong's oldest energy utility, our pioneering green initiatives date as far back as the early 70s, when we began using naphtha rather than heavy oil and coal to produce town gas. This move has reduced the emission of sulphur dioxide over the years, contributing to the prevention of acid rain. In 2006, we took another significant step forward, when we introduced natural gas as a feedstock in addition to naphtha. Together with the use of landfill gas for gas production purposes, we have been able to lower emissions of carbon dioxide even further to the impressive level of 20%. Looking forward, we are committed to the ongoing exploration and supply of clean energy to ensure a green and sustainable future for our young people and the generations to come.

Greening up your life



[www.mtr.com.hk](http://www.mtr.com.hk)

caring for life's journeys







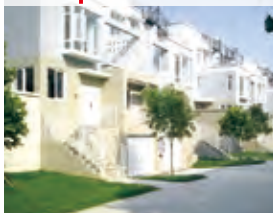
# **Diversified Global Conglomerate**

*Pursuing Customer Satisfaction & Quality Excellence*

**Lifts & Escalators**



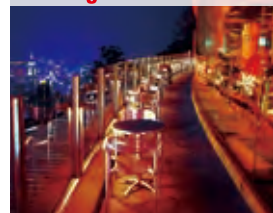
**Property Investment & Development**



**Lifestyle Food & Beverage**



**Lifestyle Food & Beverage**



**Construction & Engineering**



**Aluminium Windows & Curtain Walls**



**Hotel Investment**



**Building Construction**



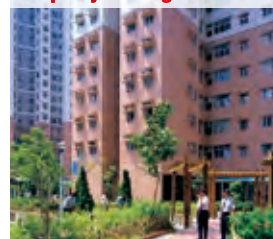
**Insurance & Investment**



**Civil & Environmental Engineering**



**Property Management**



**Electrical & Mechanical Engineering**



**Senior Housing**



**Property & Hotel**



**Building Materials & Equipment**



**Information Technology**



**Agriculture**



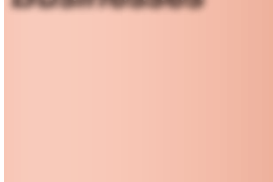
**Cold Storage & Logistics**



**Information Technology**



**Other Businesses**



**Automobile & International Trading**



## **CHEVALIER GROUP**

**Hong Kong • Australia • Canada • China • Japan • Macao • Philippines • Singapore • Thailand • USA • Vietnam**

22/F, CHEVALIER COMMERCIAL CENTRE, 8 WANG HOI ROAD, KOWLOON BAY, HONG KONG

TEL: (852) 2318 1818

FAX: (852) 2757 5138

[WWW.CHEVALIER.COM](http://WWW.CHEVALIER.COM)





俊和發展集團  
CHUN WO DEVELOPMENT HOLDINGS LIMITED



Build  
a better future with  
**Trust & Commitment**  
承諾互信 共建未來



Trackwork Engineering 路軌工程  
East Rail Ma On Shan Extensions  
東鐵馬鞍山延線



Civil Engineering 土木工程  
Central-Wan Chai Bypass at Wai Chai East & HKCEC  
中環灣仔繞道灣仔東段及香港會議展覽中心段



Building Construction 樓宇建築  
Hong Kong International Airport SkyPlaza  
香港國際機場翔天廊

Property Development 物業發展 • Building Construction 樓宇建築 • Civil Engineering 土木工程 • Foundations 地基工程 •  
E&M Engineering 機電工程 • Fitting Out & Interior Design 裝飾設計 • Maintenance Works 維修工程 •  
Trackwork Engineering 路軌工程 • Environmental Engineering 環境工程 • Property Management & Security 物業管理及保安服務





Dalkia is a global leader in energy services, with €8.9 billion managed revenue in 2012. Our 49,800 employees in 35 countries are managing 133,000 energy facilities.

We provide innovative solutions to support sustainable growth of cities and businesses, with objective of maximizing their technical, financial and environmental performance.

Hong Kong District Cooling Company Limited (HKDC) is a wholly-owned subsidiary of Dalkia in Hong Kong.

For more information about Dalkia, please visit [www.dalkia.com](http://www.dalkia.com)



Not all Coolants / Antifreeze products are the same. RECO-COOL products are formulated to provide superior engine system corrosion protection *from the Coolant Expert you can trust...*



**Eurostag International Limited**  
G/F, 508-510 Fuk Wing Street  
Sham Shui Po, Kowloon, Hong Kong  
Tel: +852 2743 9884  
Fax: +852 2743 9608  
Website: [www.eurostag.net](http://www.eurostag.net)





JEC

Together we engineer a better Asia



Jardine Engineering Corporation (JEC) is a leading provider of products and services that enhance Asia's built environment. The group provides sourcing, engineering contracting, and technical services for buildings, the energy and transport sectors, and environmental infrastructure.

Established in Shanghai in 1923, JEC is now headquartered in Hong Kong and operates throughout Asia. JEC is a member of the Jardine Matheson Group.

**Jardine Engineering Corporation****Hong Kong Headquarters**

5/F Tower A Manulife Financial Centre  
223-231 Wai Yip Street Kwun Tong  
Kowloon Hong Kong  
Tel. 852 2807 1717  
Fax 852 2887 9090  
Email [jec@jec.com](mailto:jec@jec.com)  
[www.jec.com](http://www.jec.com)

 A member of the Jardine Matheson Group

HONG KONG • MAINLAND CHINA • MACAU • PHILIPPINES • SINGAPORE • THAILAND



**NHA 葡園**  
The Portuguese Wine Specialist

香港新界元朗康業街19号万輝工業中心521室  
Room 521 Mansfield Industrial Centre,  
19 Hong Yip Street · Yuen Long, N.T., HONG KONG

電話: (852) 2172 7038  
E-mail: [vinha@biznetvigator.com](mailto:vinha@biznetvigator.com)

*The Portuguese Wine Specialist*





THE HONG KONG  
POLYTECHNIC UNIVERSITY  
香港理工大學

DEPARTMENT OF MECHANICAL ENGINEERING  
機械工程學系

We sustain the responsibility to take the initiative to assist in building up of a thriving and healthier society by achieving

## excellence in education and research

with global out-reach and impact.

Homepage: <http://www.polyu.edu.hk/me>

Email: [mmquiry@polyu.edu.hk](mailto:mmquiry@polyu.edu.hk)



有利集團有限公司  
Yau Lee Holdings Limited



## Green Integrated Corporation

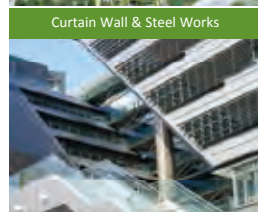
Comprehensive Supply Chain | Specializes in Modular Fast Track Construction | Green Building Technology



Holiday Inn Express Hong Kong SoHo



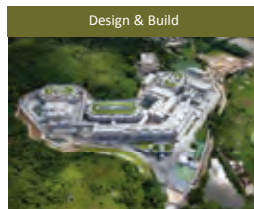
Construction



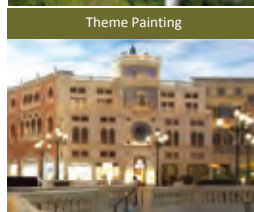
Curtain Wall & Steel Works



Property Development



Design & Build



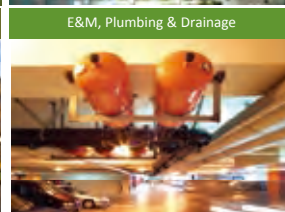
Theme Painting



Low-Carbon Green Building Material



Fitting Out, Renovation & Maintenance



E&M, Plumbing & Drainage



Construction IT Solutions



Concrete Precast / GRC / GRG / GRP



Architects & Engineers



Energy Optimization Solution

We Build · We Serve · We Create

[www.yaulee.com](http://www.yaulee.com)



# WHAT DO YOU THINK ENGNOW REPRESENTS?

Institution of  
**MECHANICAL  
ENGINEERS**

Asia Pacific Regions



## ENGNOW REPRESENTS “THE FUTURE OF ENGINEERING IS NOW”.

It is a 360 degree training programme for tomorrow's leading engineers and supporting the development of young engineers. To become a world-class engineer in the 21st century, it is no longer sufficient to be an expert in your field. Today's top engineers must also demonstrate leadership, communication skills, problem solving and critical thinking.

The crux of the EngNow logo design is the g/o letterform that symbolizes the inextricable link between engineering and the era in which it is practiced. The logo is clean and modern, built with geometric shapes and smooth curves. The strong and even strokes represent the strength and precision of engineering, while the gentle curved shapes represent the soft skills required by today's well-rounded engineers.

TO FIND OUT MORE ABOUT ENGNOW - 360 LEADERSHIP TRAINING,  
PLEASE VISIT [WWW.NEARYOU.IMECHE.ORG](http://WWW.NEARYOU.IMECHE.ORG)

**Improving the world through engineering**



# Campus Map

## 校園地圖



### 16/9/2013 (DAY 1)

Morning (0900 hr. - 0910 hr.)  
Opening Remark by Prof Tong, Timothy W.  
Location: CCST

Morning (0910 hr. - 0940 hr.)  
Keynote Address by Ir Wai, Chi-Sing  
Location: CCST

Morning (0940 hr. - 1010 hr.)  
Keynote Speech:  
"International Leadership in the Public and Private Sector"  
by Mr Paul Lynch  
Location: CCST

Morning (1010 hr. - 1040 hr.)  
Keynote Speech:  
"Engineers and Leaders in Common"  
by Prof Stuart Cameron, MBE  
Location: CCST

### 16/9/2013 (DAY 1)

Morning (1100 hr. - 1230 hr.)  
Forum 1: "View for Leaders - How Different and How Common We Are"  
Chaired by Ir Edmund Leung  
Location: CCST

Afternoon (1400 hr. - 1530 hr.)  
Forum 2: "Be a Leader of Yourself - What Is Needed To Become a Successful Entrepreneur"  
Chaired by Ir Dr Otto Poon  
Location: JCA

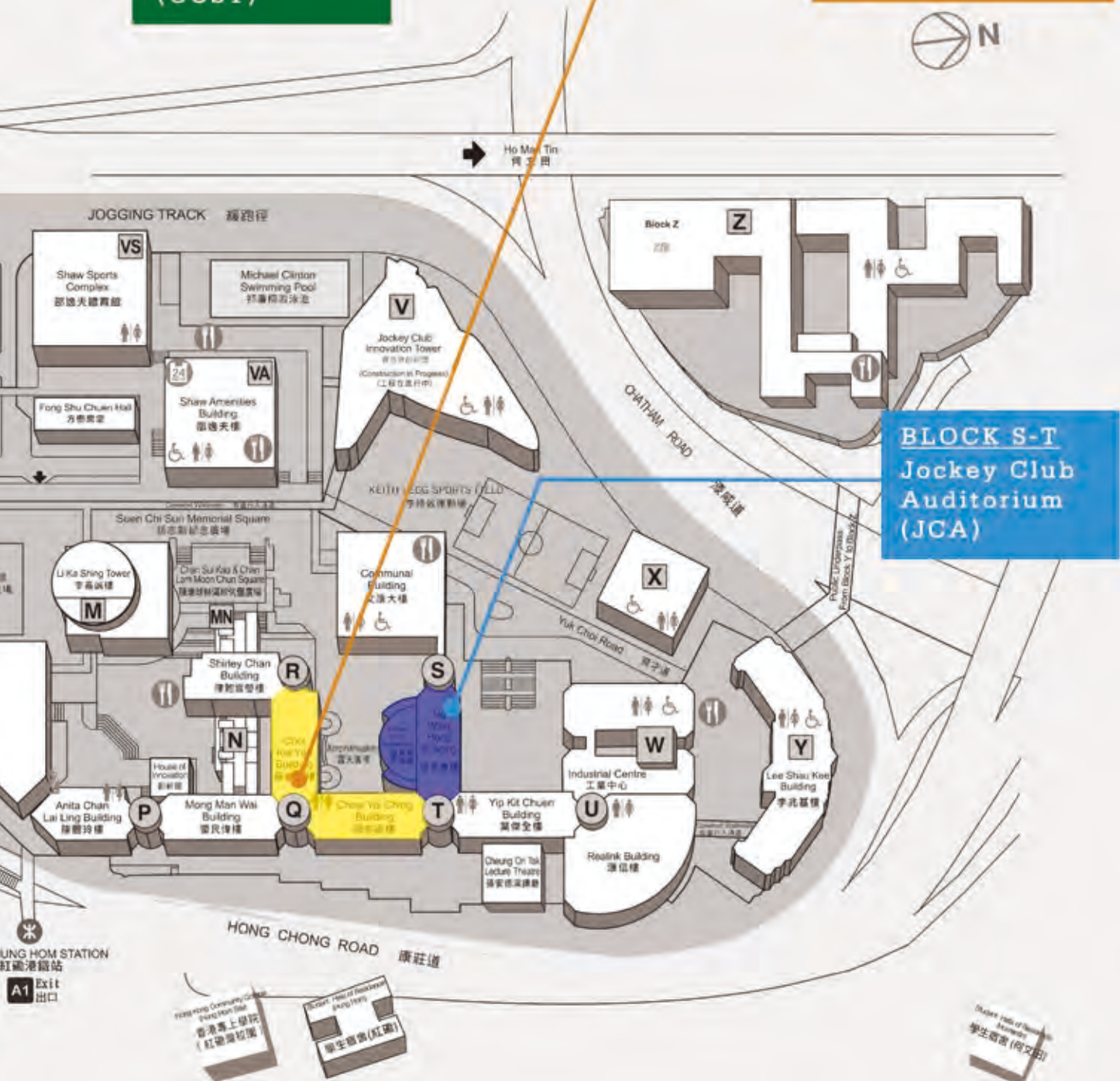
Afternoon (1600 hr. - 1700 hr.)  
Lecture 1: "How can Leadership be Learned?"  
by Prof Wu, Po-Chi  
Location: JCA

Afternoon (1600 hr. - 1700 hr.)  
Lecture 2: "Bring Your Point Out with Power"  
by Mr Donald Yee  
Location: CCST



**BLOCK A-G**  
Chiang Chen  
Studio Theatre  
(CCST)

**BLOCK Q-R & Q-T**  
Lunch Area  
(16-17/9/2013)



### 17/9/2013 (DAY 2)

Morning (0900 hr. - 1000 hr.)

Lecture 3: "Courage to Lead: How to Build Courage?"

by Mrs Sandra Mak

Location: JCA

Morning (1000 hr. - 1100 hr.)

Lecture 4: "From No-idea Towards Marketable Products - Engineering and Business Integration"

by Prof Lau, Alan K T

Location: JCA

Morning (1115 hr. - 1215 hr.)

Lecture 5: "Discovering Success Through High Performing Teams"

by Mr Andrew Webster

Location: JCA

### 17/9/2013 (DAY 2)

Afternoon (1345 hr. - 1515 hr.)

Forum 3: "Roles of Global Engineering Leaders"

Chaired by Ir Dr Tso, Che-Wah

Location: JCA

Afternoon (1535 hr. - 1700 hr.)

Forum 4: "Future Engineering Leaders - What Does it Mean?"

by Prof Wu, Po-Chi

Location: JCA

Afternoon (1700 hr. - 1710 hr.)

Closing Remark

by Prof Lau, Alan K T

Location: JCA