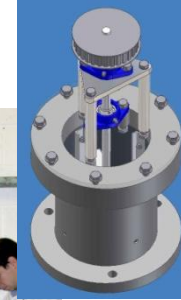
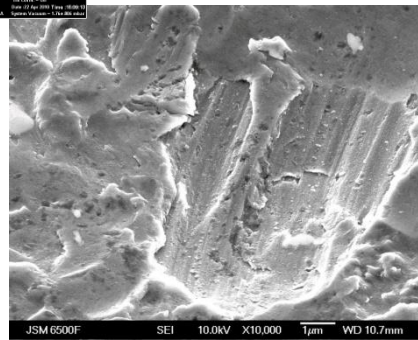
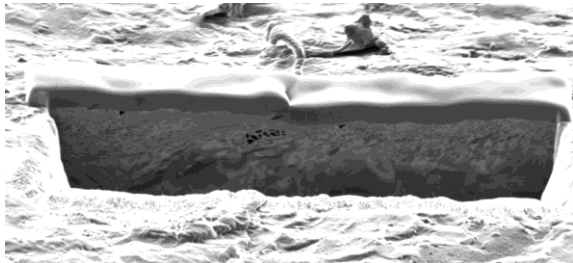
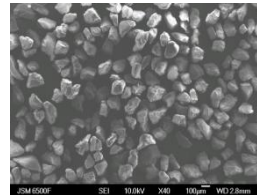
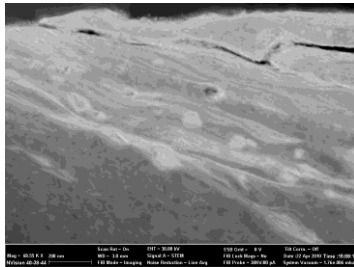
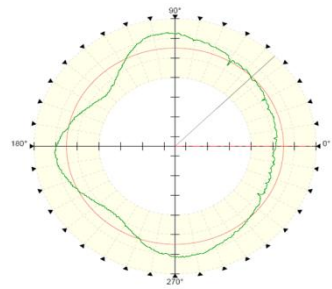


Erosion and Erosion-Corrosion

Background

- Erosion and erosion-corrosion affects numerous areas, including food industry, automotive components, fluidised beds combustors, power plants, marine pumping, mining, desalination plants, oil and gas industry.
- Involves impingement by solid particle carried by a fluid stream (air, water) which can be corrosive.



Testing and Analysis

- Testing involves various type of rigs, that either jet the particles at the target surface or rotate test specimens in suspend particle media.
- Analysis involves examining material removal rates – gravimetric and surface profilometry
- Mechanistic studies require the use of optical and electron microscopy techniques, such as SEM, TEM, FIB, EDX, SIMS.